

vDisplay Manager

User Guide

> Contents

Introduction	4
What is vDisplay Manager?	4
VP Series	4
Monitor Support	4
VG Series.....	4
Monitor Support	4
Initial Setup.....	5
Where to get vDisplay Manager?	5
Connection Methods	6
Using vDisplay Manager - VP Series	7
Menu Layout and Features.....	7
Tags	7
Sidebar Menu	8
ViewSonic® Homepage Link	9
Sidebar Menu	10
Color Mode	10
PBP/PIP (Picture-by-Picture/Picture-in-Picture).....	13
Basic Settings.....	15
Advanced Settings.....	17
Using vDisplay Manager - VG Series.....	19
Main Menu and Its Features	19
Tags	19
Sidebar Menu	20
Adjustable Settings:.....	20
ViewSonic® Homepage Link	21
Sidebar Menu	22
Productivity Menu.....	22
Eye Care Menu	23
Basic Settings Menu	24
Advanced Settings Menu	25
Product Preview	25

Advanced Features - VG Series 26

 Screen Split26

 AutoLaunch.....27

 Smart Backlight.....28

Appendix..... 29

 Firmware Update.....29

 Software Update30

> Introduction

What is vDisplay Manager?

vDisplay Manager improves your productivity and puts the On-Screen Display (OSD) Menu controls on your monitor's screen. Here you can quickly and easily adjust the monitor's display, increase user efficiency, and make your viewing experience more comfortable.

VP Series

- Quickly set Standard Color, ViewMode, Color Temperature, and Calibration options.
- Improve productivity with PBP/PIP.
- Adjust Brightness, Contrast, Image Sharpness, Blue Light Filter, Audio, and Input Source.
- Easily set Screen Pivot with Auto/CW/CCW/Reset.

Monitor Support

Currently, vDisplay Manager supports the VP Series of monitors. It specifically supports:

- » VP2458, VP2771, VP2785-4K
- » VP2468, VP2768, VP2768-4K, VP3268-4K
- » VP3481, VP3881

VG Series

- Adjust Screen Pivot, Audio, Brightness, and Contrast.
- Quickly access ViewMode options.
- Access the Blue Light Filter and Smart Backlight for comfortable viewing.
- Improve productivity with Screen Split and AutoLaunch.

Monitor Support

Currently, vDisplay Manager supports the VG Series of monitors. It specifically supports:

- » VG2248, VG2448, VG2748, VG3448
- » VG2455, VG2755, VG2455-2K, VG2755-2K

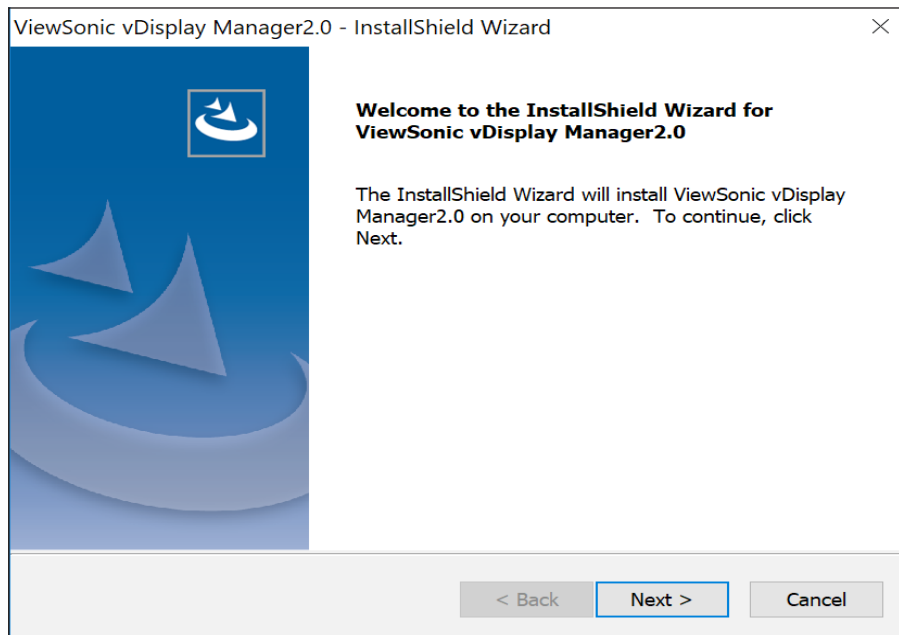
> Initial Setup

This section provides important instructions for getting started with vDisplay Manager.

Where to get vDisplay Manager?

vDisplay Manager can be downloaded at: <http://www.viewsonic.com/>

After the download completes, launch the setup file and follow the on-screen directions to install the software.

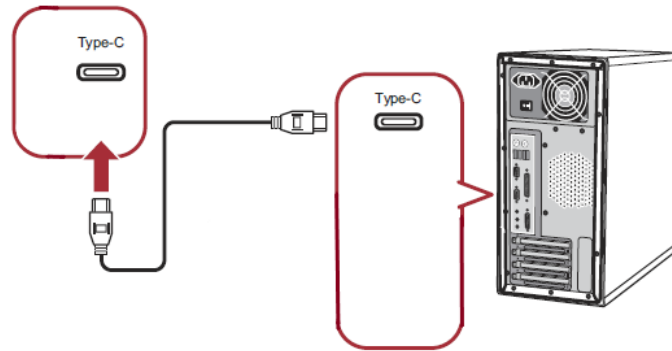


Once the installation has finished, click on the vDisplay Manager icon to launch the software.

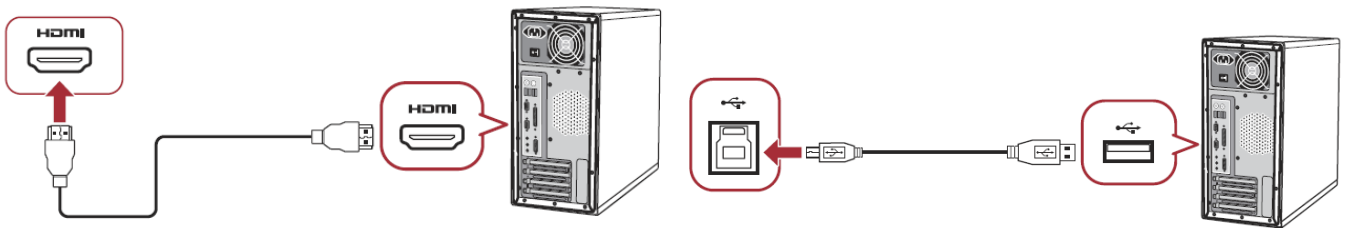
Connection Methods

In addition to downloading the software, ensure that your monitor(s) are properly connected via:

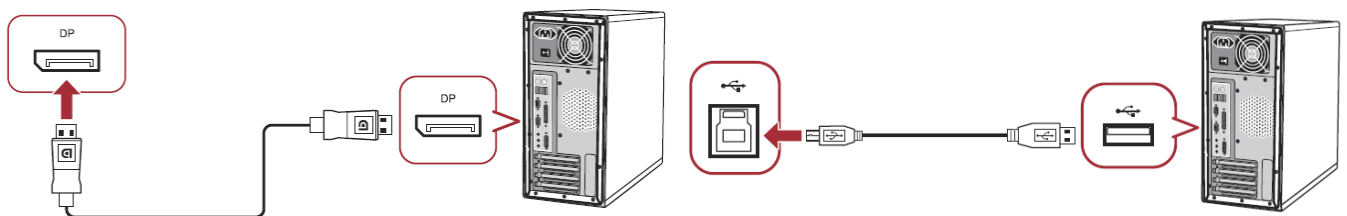
- USB Type-C



- HDMI and USB Upstream (USB Type-B), or



- DisplayPort and USB Upstream (USB Type-B).

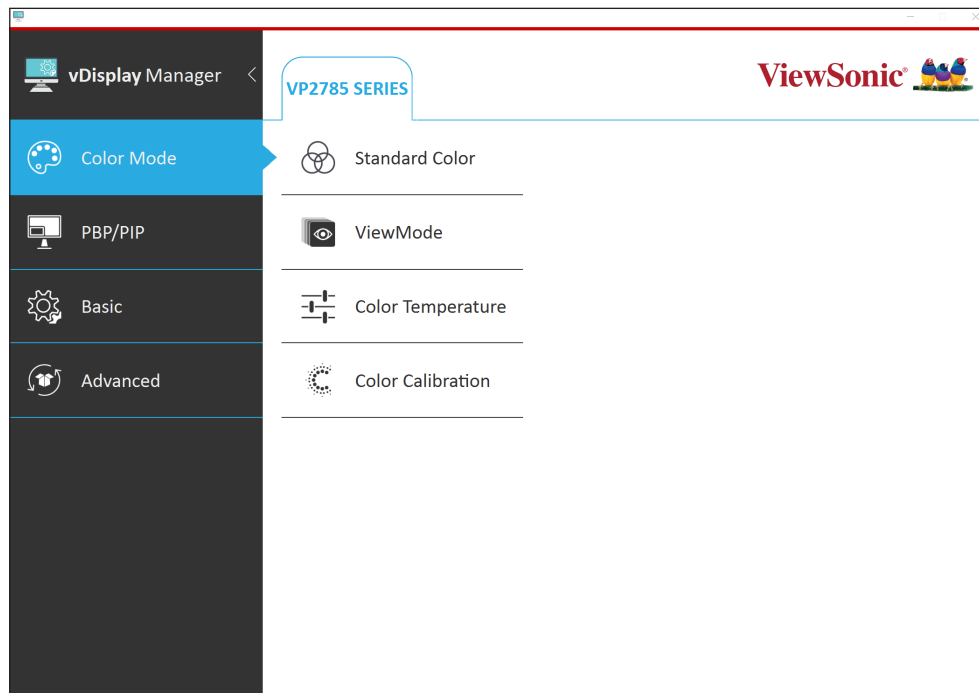


NOTE: If a VP/VG series monitor is not detected, the software will automatically close.

> Using vDisplay Manager - VP Series

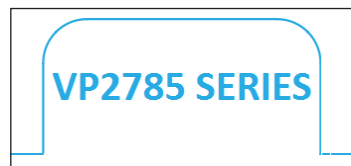
This section will describe the general use and operation of vDisplay Manager.

Menu Layout and Features



Tags

At the top of each menu screen a **Tag** will be displayed, one for every monitor connected.

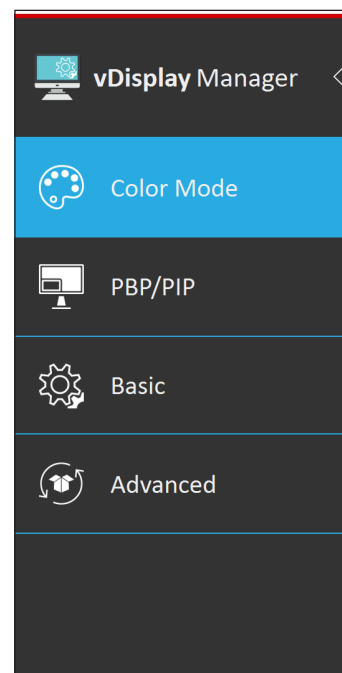


NOTE: Up to four (4) monitors can be connected and tagged, however, this is dependent on your computer's graphics card capability.

Sidebar Menu

On the left side are the sub-menus:

Sub-Menu	Options
Color Mode	<ul style="list-style-type: none">• Standard Color• ViewMode• Color Temperature• Color Calibration
PBP/PIP	<ul style="list-style-type: none">• PBP• PIP
Basic Settings	<ul style="list-style-type: none">• Color Adjust• Image Adjust• Audio Adjust• Input Select
Advanced Settings	<ul style="list-style-type: none">• Information• Auto Pivot• All Recall



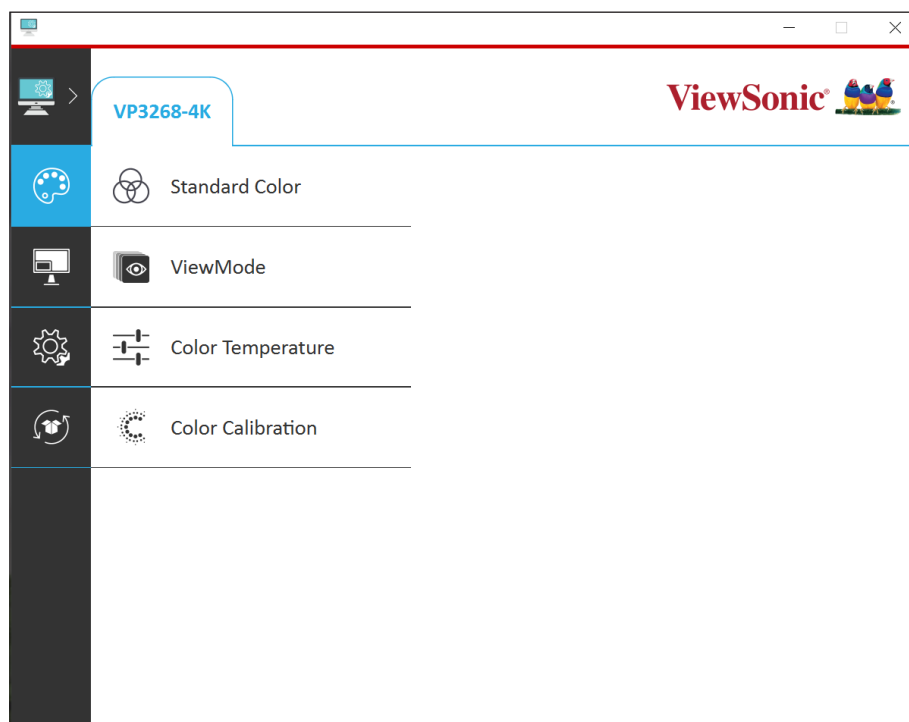
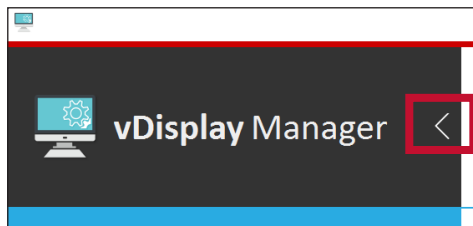
NOTE: For more information, see page 10.

ViewSonic® Homepage Link

In the top-right corner, a link to the ViewSonic® home page is placed for convenience.



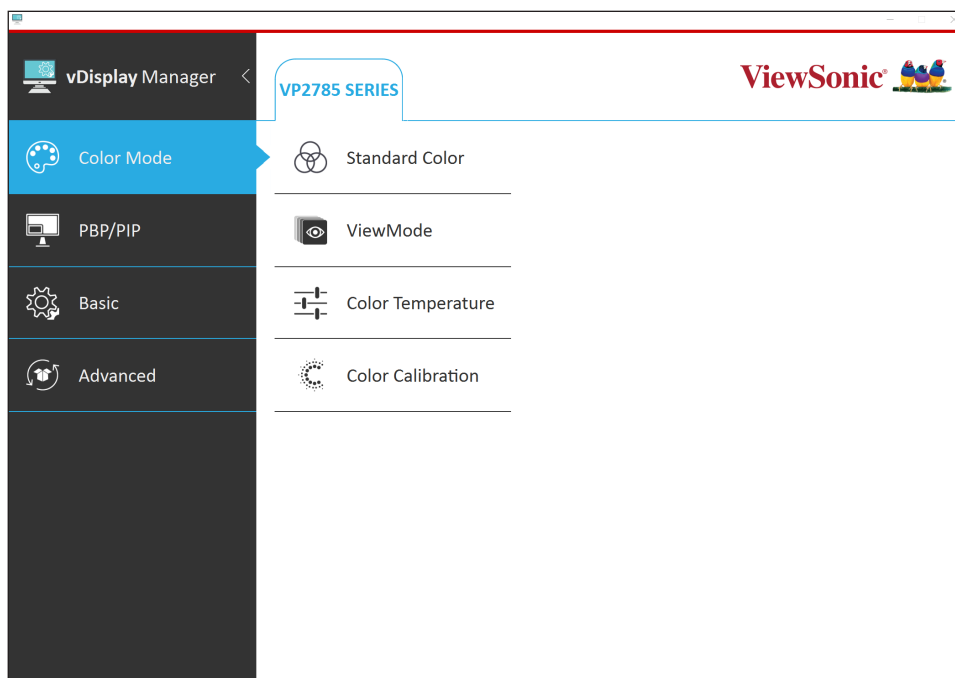
In addition to the standard view of the *Main Menu*, the **Sidebar Menu** can also be minimized by selecting the tab as shown below:



Sidebar Menu

More settings can be adjusted via the sub-menus: Color Mode, PBP/PIP, Basic Settings, and Advanced Settings.

Color Mode

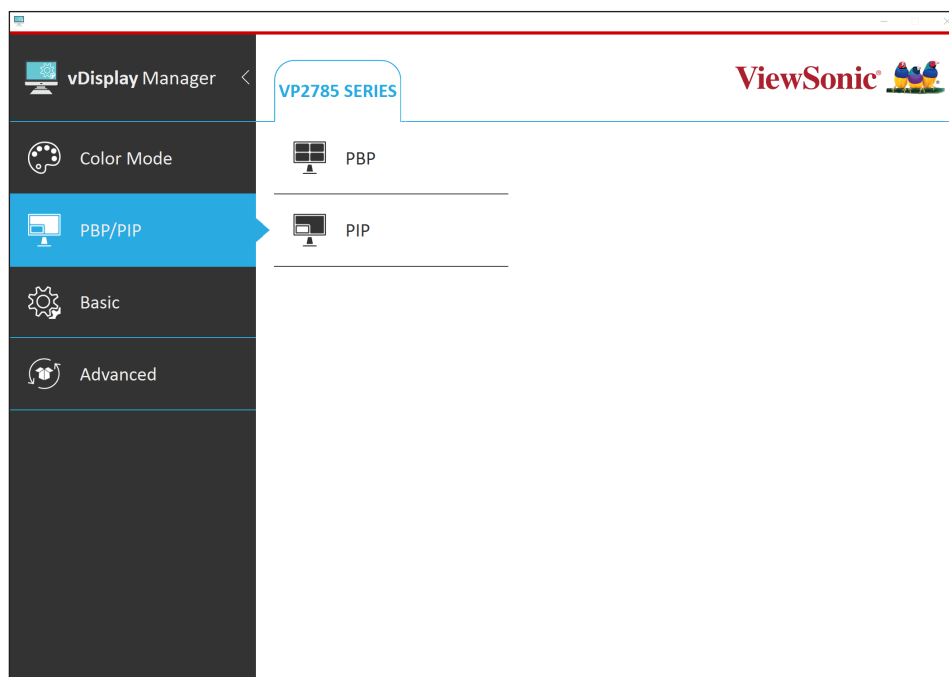


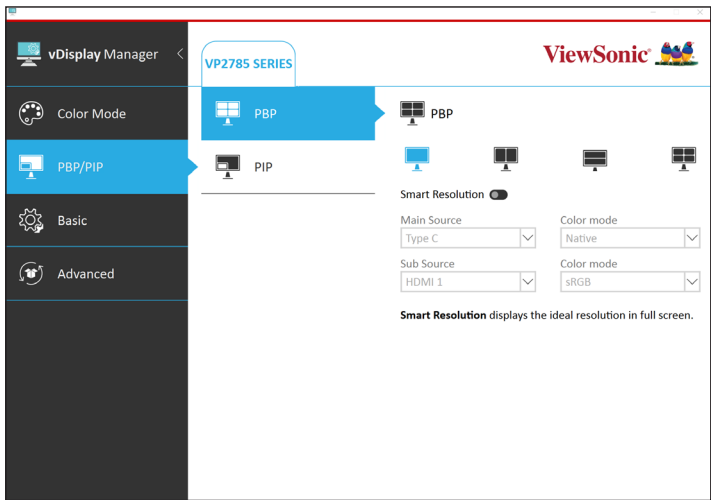
Menu Option	Description
Standard Color	<u>sRGB</u> Precise color gamut and gamma of the sRGB standard. <u>Adobe RGB</u> Precise color gamut and gamma of the Adobe RGB standard. <u>EBU</u> Precise color gamut and gamma of the European Broadcasting Union standard. <u>SMPTE-C</u> Precise color gamut and gamma of the SMPTE-C standard. <u>REC 709</u> Precise color gamut and gamma of the ITU-R Rec. 709 standard. <u>DICOM SIM</u> Gamma curves are set to a DICOM simulation. <u>DCI-P3</u> Precise color gamut and gamma of the DCI-P3 standard.

Menu Option	Description
ViewMode	<p><u>Standard</u> Select this option for general use.</p> <p><u>Movie</u> Select this option for watching movies.</p> <p><u>Game: FPS 1/Game: FPS 2</u> Ideal for First-Person Shooter games.</p> <p><u>Game: RTS</u> Calibrated for Real-Time Strategy games.</p> <p><u>Game: MOBA</u> Select this option for Multiplayer Online Battle Arena games.</p> <p><u>Web</u> Select this option for browsing websites.</p> <p><u>Text</u> Ideal for text files and reading.</p> <p><u>MAC</u> Select this option when connecting the monitor with Mac computers.</p> <p><u>Designer: CAD/CAM</u> Select this option for viewing design files.</p> <p><u>Designer: Animation</u> Select this option for viewing graphic design files.</p> <p><u>Designer: Video Edit</u> Optimized for video editing.</p> <p><u>Photographer: Retro</u> Select for a classic film color scheme.</p> <p><u>Photographer: Photo</u> Ideal for general photo work.</p> <p><u>Photographer: Landscape</u> Ideal for landscape orientation.</p> <p><u>Photographer: Portrait</u> Optimized for portrait orientation.</p> <p><u>Photographer: Monochrome</u> Sets the screen in a monochromatic setting.</p>

Menu Option	Description
Color Temperature	<p><u>Panel Default</u> Use the panel default mode.</p> <p><u>Bluish</u> Set the color temperature to 9300K.</p> <p><u>Cool</u> Set the color temperature to 7500K.</p> <p><u>Native</u> Native is a default color temperature. Recommended for general graphic design and regular use.</p> <p><u>Warm</u> Set the color temperature to 5000K.</p> <p><u>User</u> Customized by the user.</p>
Color Calibration	<p><u>Color Calibration: CAL 1</u> Display with the 1st user calibration mode.</p> <p><u>Color Calibration: CAL 2</u> Display with the 2nd user calibration mode.</p> <p><u>Color Calibration: CAL 3</u> Display with the 3rd user calibration mode.</p>

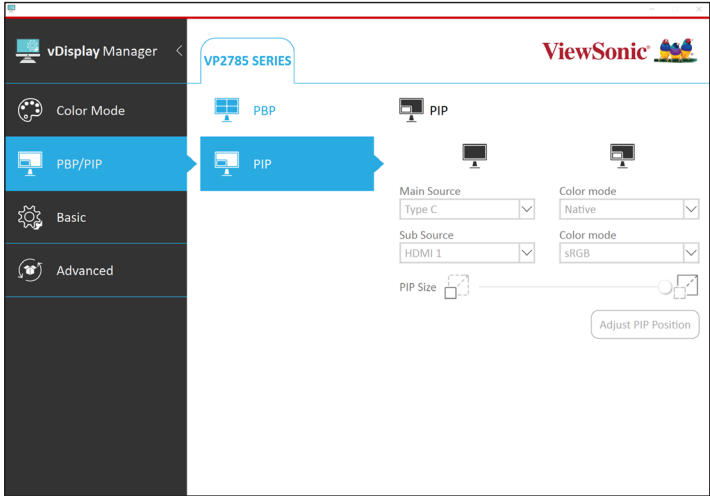
PBP/PIP (Picture-by-Picture/Picture-in-Picture)



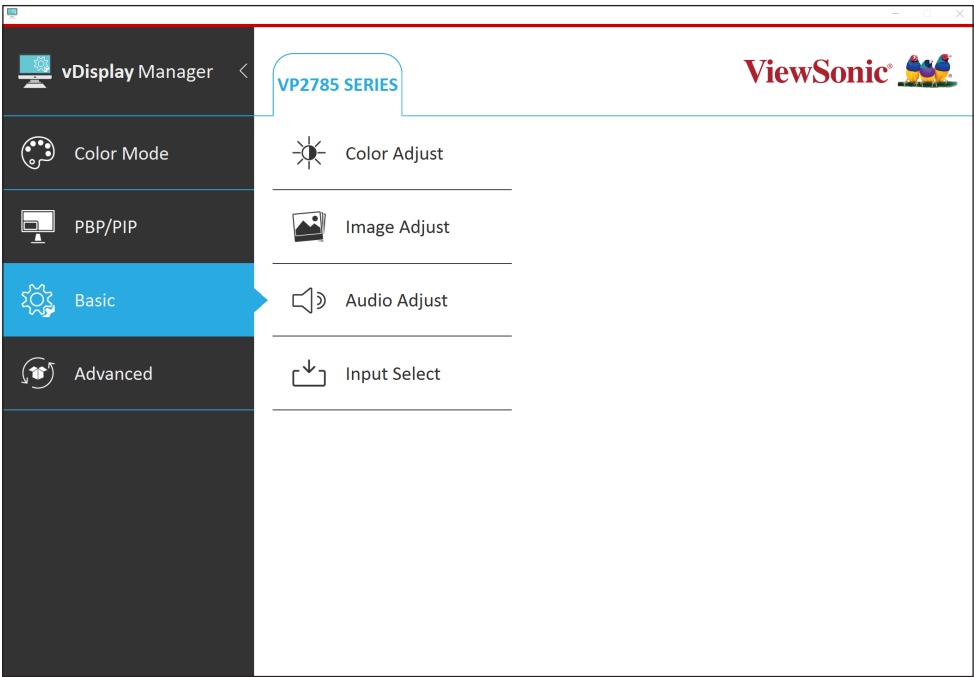
Menu Option	Description
PBP (Picture-by-Picture)	<p>Adjust layout preference, select input sources, set color modes, and</p>  <p>turn on Smart Resolution to set your PBP screen with its ideal resolution at full screen.</p>

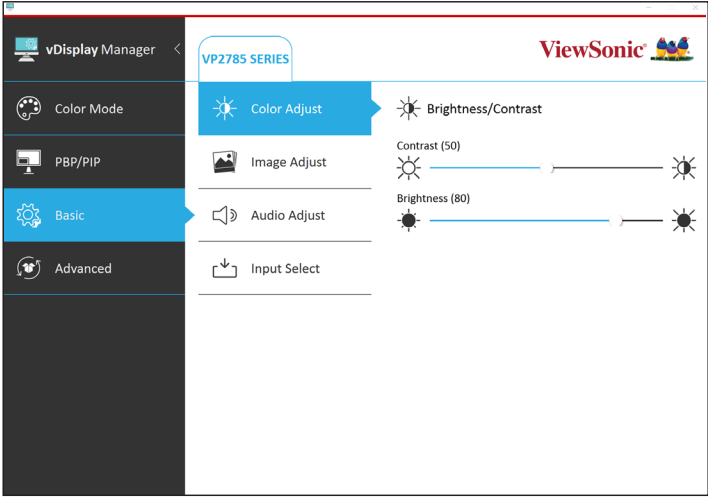
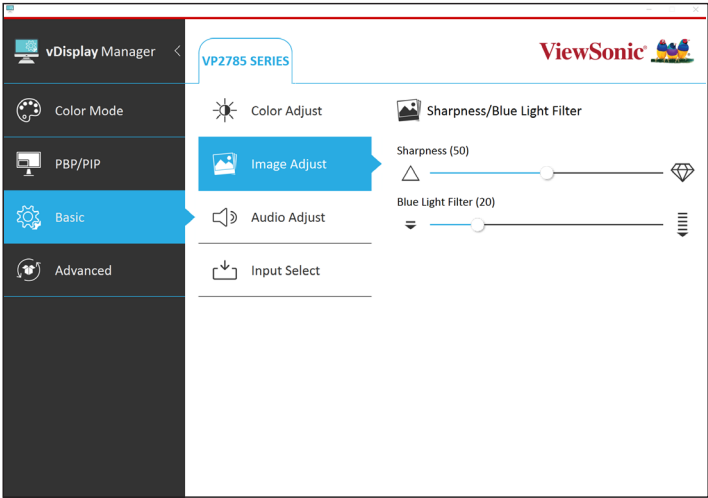
NOTE: Please note how many screens can be supported:

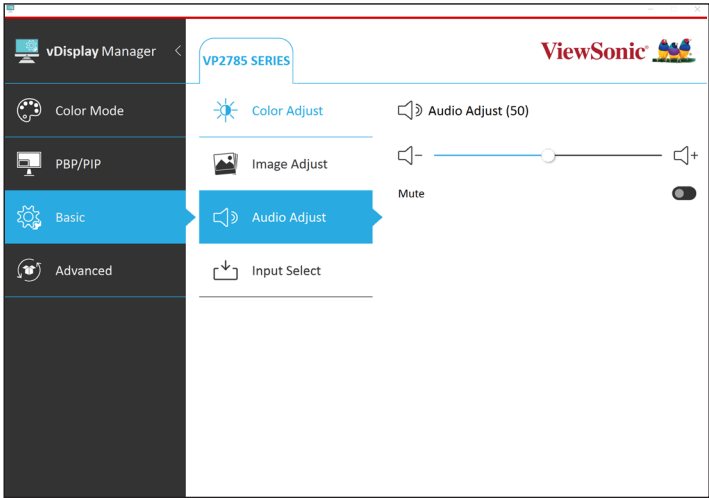
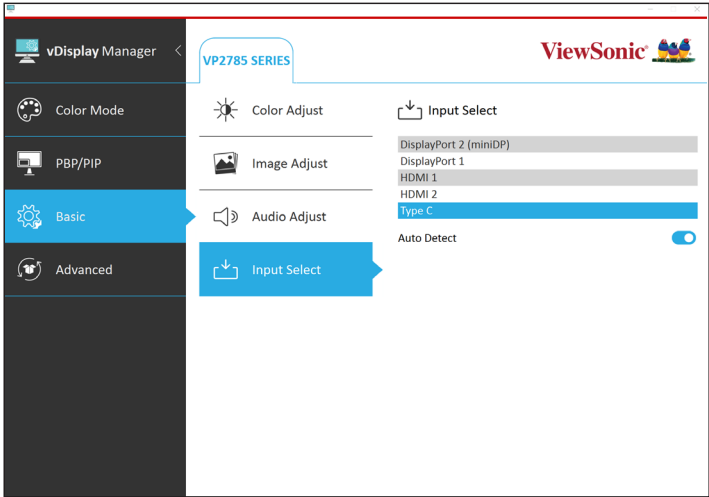
Screen Division	Model Support
4 screens	<ul style="list-style-type: none"> • VP2785-4K • VP3268-4K • VP3481 • VP3881
2 screens	<ul style="list-style-type: none"> • VP2771

Menu Option	Description
PIP (Picture-in-Picture)	<p>Adjust layout and size preference, select input sources, set color modes, and adjust the PIP screen size with the sliding bar.</p>  <p>The screenshot shows the 'vDisplay Manager' interface for the 'VP2785 SERIES'. On the left is a dark sidebar with menu options: 'Color Mode', 'PBP/PIP' (highlighted in blue), 'Basic', and 'Advanced'. The main area is titled 'VP2785 SERIES' and 'ViewSonic'. It features a sub-menu with 'PBP' and 'PIP' (highlighted in blue). The 'PIP' settings include: 'Main Source' (Type C), 'Sub Source' (HDMI 1), 'Color mode' (Native), and 'Color mode' (sRGB). There is a 'PIP Size' slider and an 'Adjust PIP Position' button.</p>

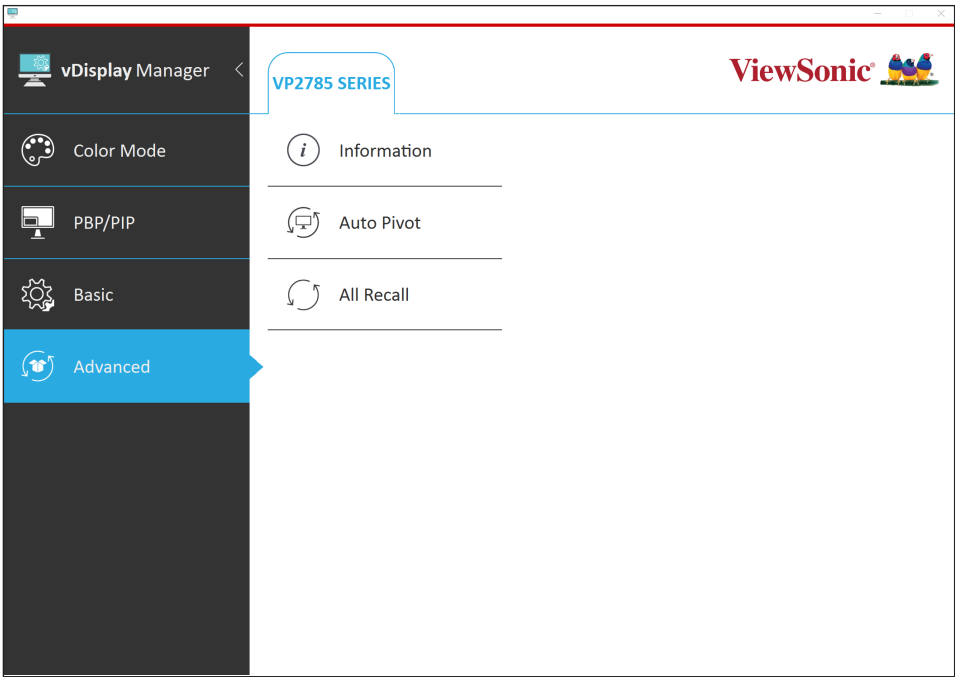
Basic Settings

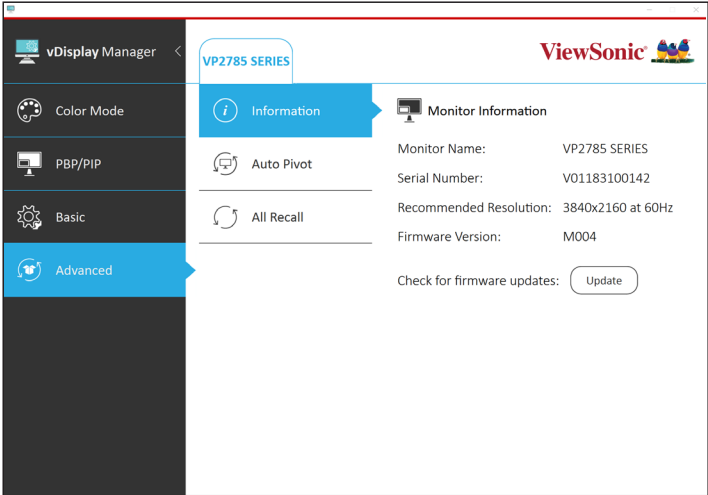


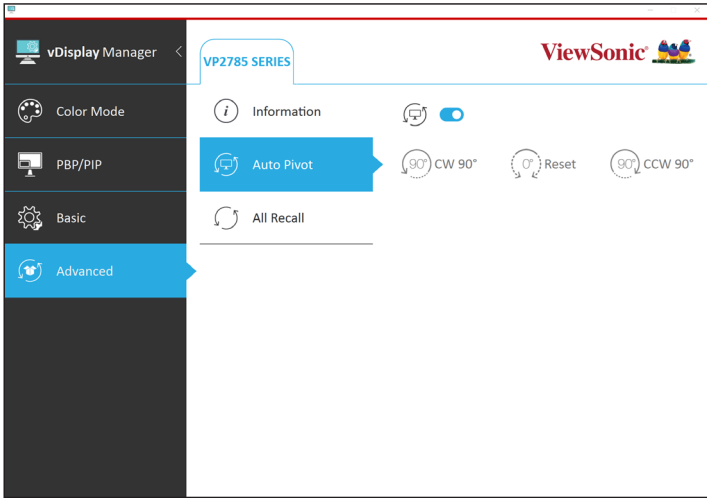
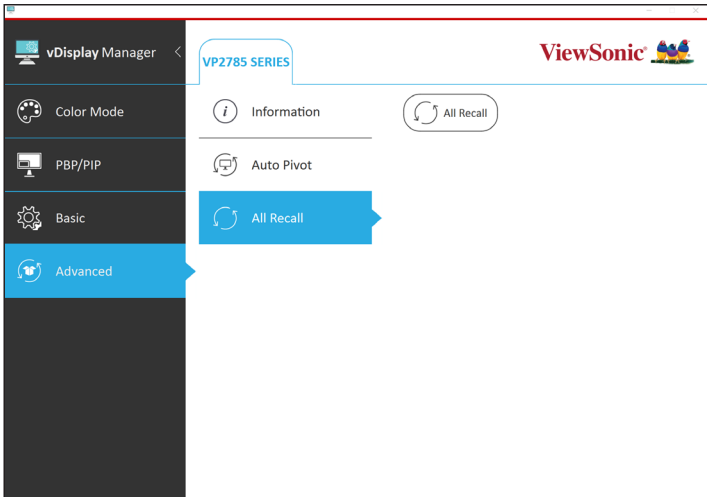
Menu Option	Description
Color Adjust	Adjust Brightness and Contrast. <div>This screenshot shows the 'Color Adjust' menu selected in the sidebar. The main area displays 'Brightness/Contrast' settings. There are two sliders: 'Contrast (50)' and 'Brightness (80)'. Each slider has a sun icon at the right end and a lightbulb icon at the left end.</div>
Image Adjust	Adjust Sharpness and Blue Light Filter. <div>This screenshot shows the 'Image Adjust' menu selected in the sidebar. The main area displays 'Sharpness/Blue Light Filter' settings. There are two sliders: 'Sharpness (50)' and 'Blue Light Filter (20)'. The Sharpness slider has a diamond icon at the right end and a triangle icon at the left end. The Blue Light Filter slider has a sun icon at the right end and a lightbulb icon at the left end.</div>

Menu Option	Description
Audio Adjust	<p>Increase, decrease, or mute the volume.</p> 
Input Select	<p>Toggles between the various input options that are available for the monitor. “Auto Detect” can also be toggled On/Off.</p> 

Advanced Settings



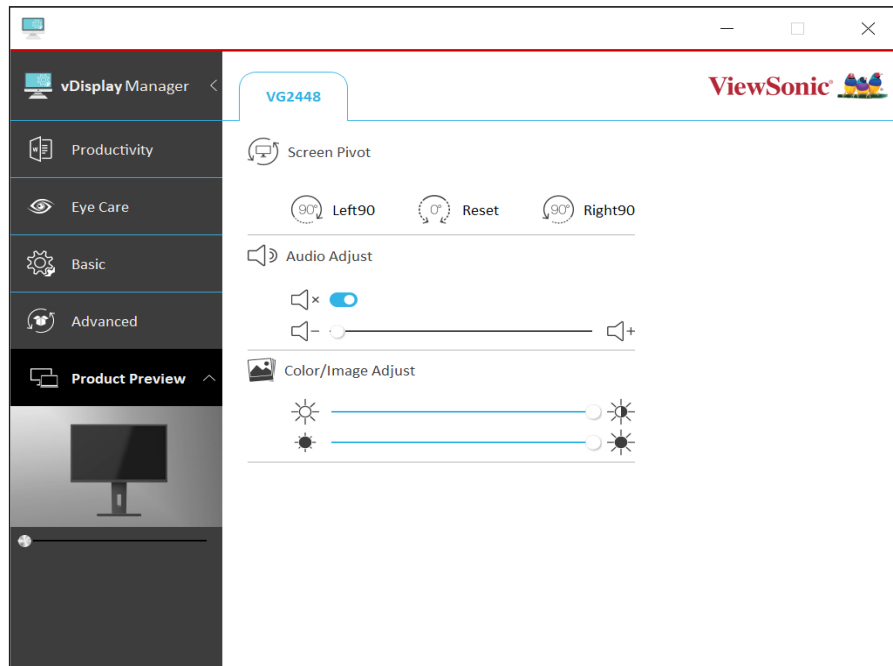
Menu Option	Description
Information	<p>Displays the Resolution, Timing mode, Model Name, Serial Number, Firmware Version, and an option to check for Firmware updates.</p> 

Menu Option	Description
Auto Pivot	<p>Toggle On/Off and rotate the screen.</p> 
All Recall	<p>Resets all the settings to default.</p> 

> Using vDisplay Manager - VG Series

This section will describe general use and operation of vDisplay Manager.

Main Menu and Its Features



Tags

At the top of each menu screen a **Tag** will be displayed, one for every monitor connected.

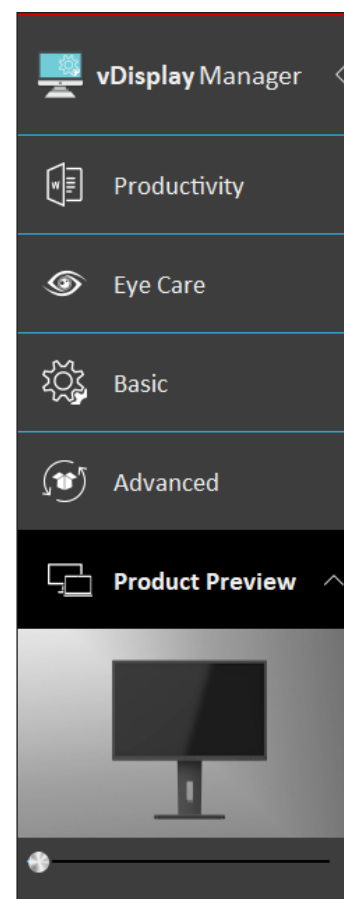


NOTE: Up to four (4) monitors can be connected and tagged, however, this is dependent on your computer's graphics card capability.

Sidebar Menu

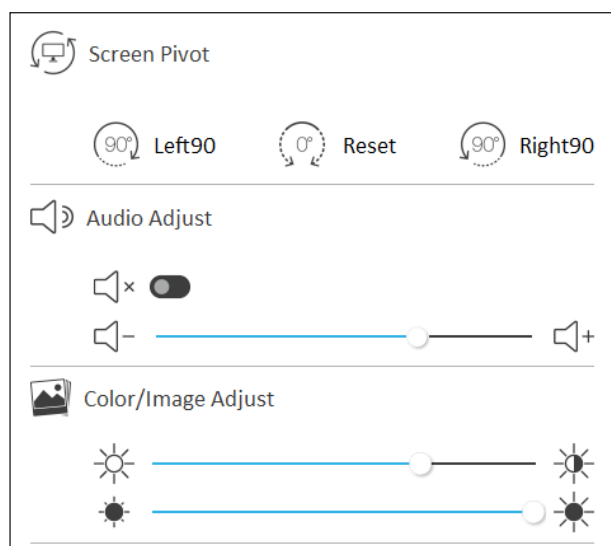
On the left side are the sub-menus:

Sub-Menu	Options
Productivity	<ul style="list-style-type: none"> Screen Pivot Screen Split AutoLaunch
Eye Care	<ul style="list-style-type: none"> Blue Light Filter Smart Backlight
Basic Settings	<ul style="list-style-type: none"> Color/Image Adjust ViewMode Audio Adjust Input Select
Advanced Settings	<ul style="list-style-type: none"> Information Power Indicator Profile Saving All Recall
Product Preview	



Adjustable Settings:

The *Main Menu* has several common settings that can be quickly adjusted.



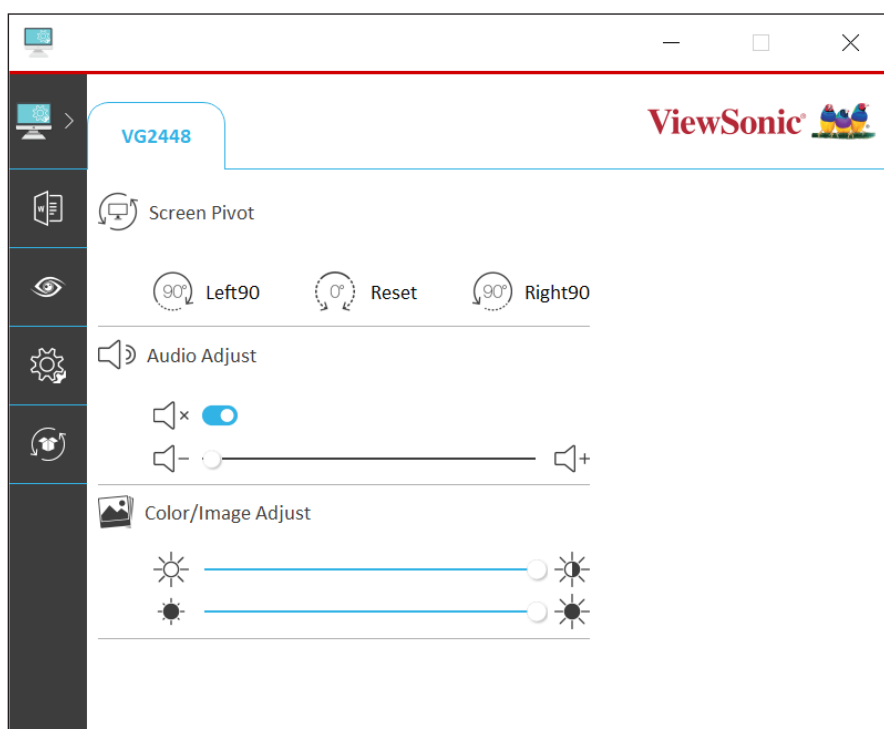
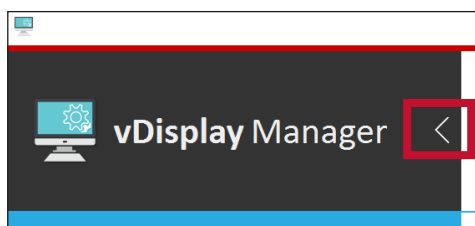
Menu Option	Description
Screen Pivot	Pivot the screen -90°, +90°, or 0°.
Audio Adjust	Increase, decrease, or mute the volume.
Color/Image Adjust	Adjust the brightness and/or contrast.

ViewSonic® Homepage Link

In the top-right corner, a link to the ViewSonic® home page is placed for convenience.



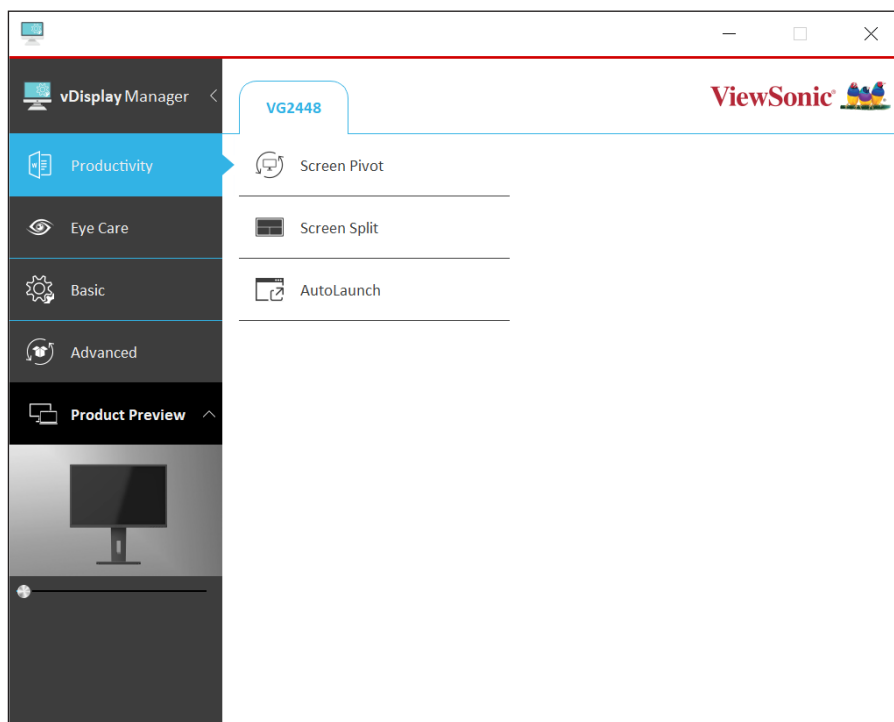
In addition to the standard view of the *Main Menu*, the **Sidebar Menu** can also be minimized by selecting the tab as shown below:



Sidebar Menu

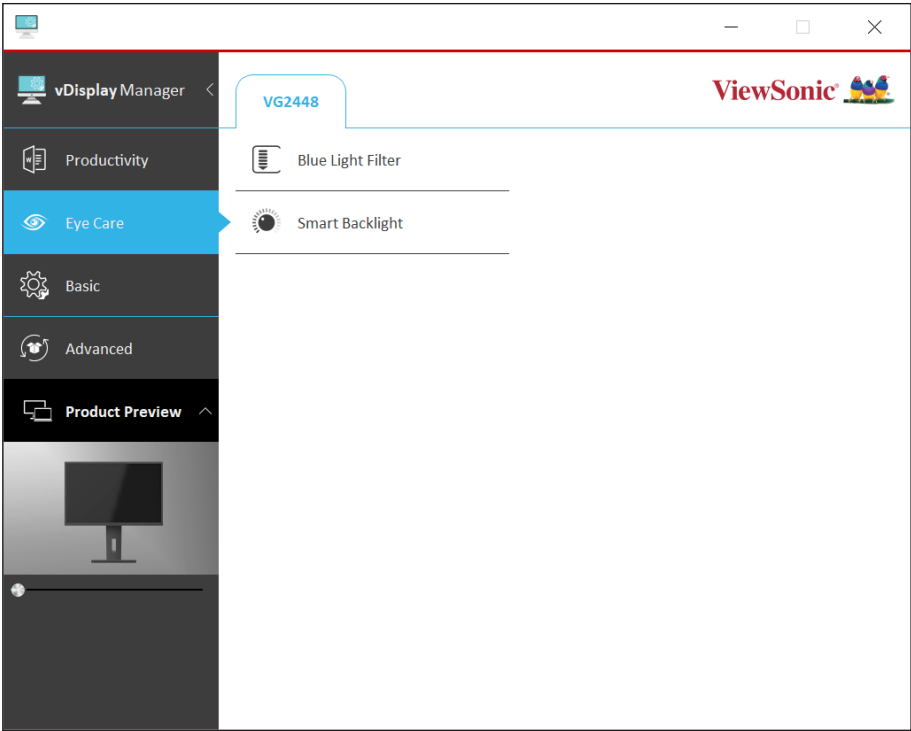
More settings can be adjusted via the sub-menus: Productivity, Eye Care, Basic Settings, and Advanced Settings.

Productivity Menu



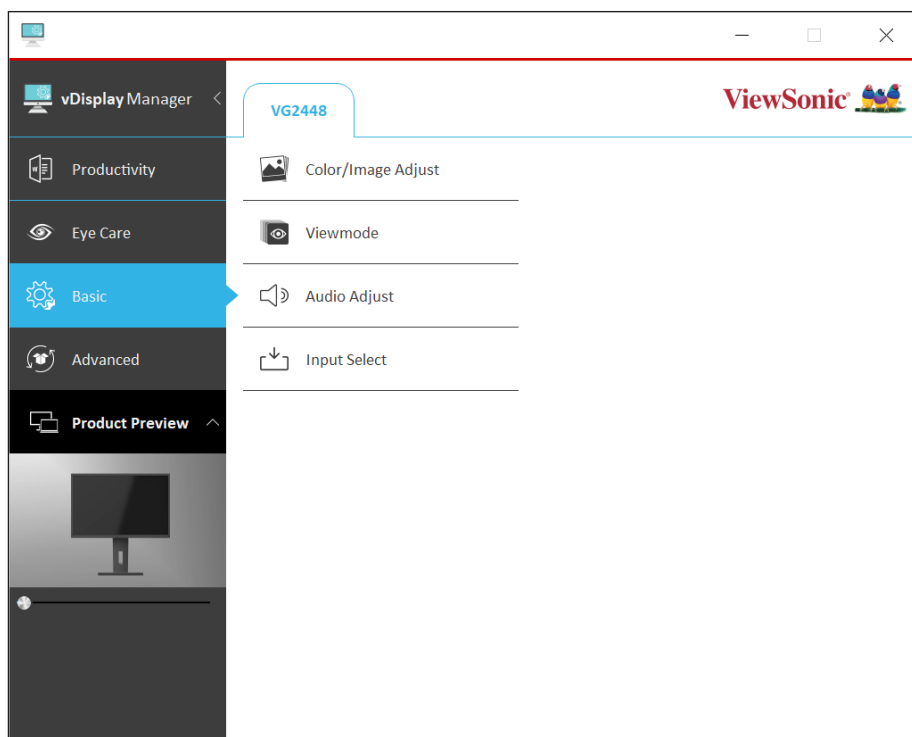
Menu Option	Description
Screen Pivot	Pivot the screen -90°, +90°, or 0°.
Screen Split	Divide the screen into several windows for better productivity. For more information, see the “Screen Split” section on page 26.
AutoLaunch	Automatically launch several windows in a set pattern with certain applications already open. For more information, see the “AutoLaunch” section on page 27.

Eye Care Menu



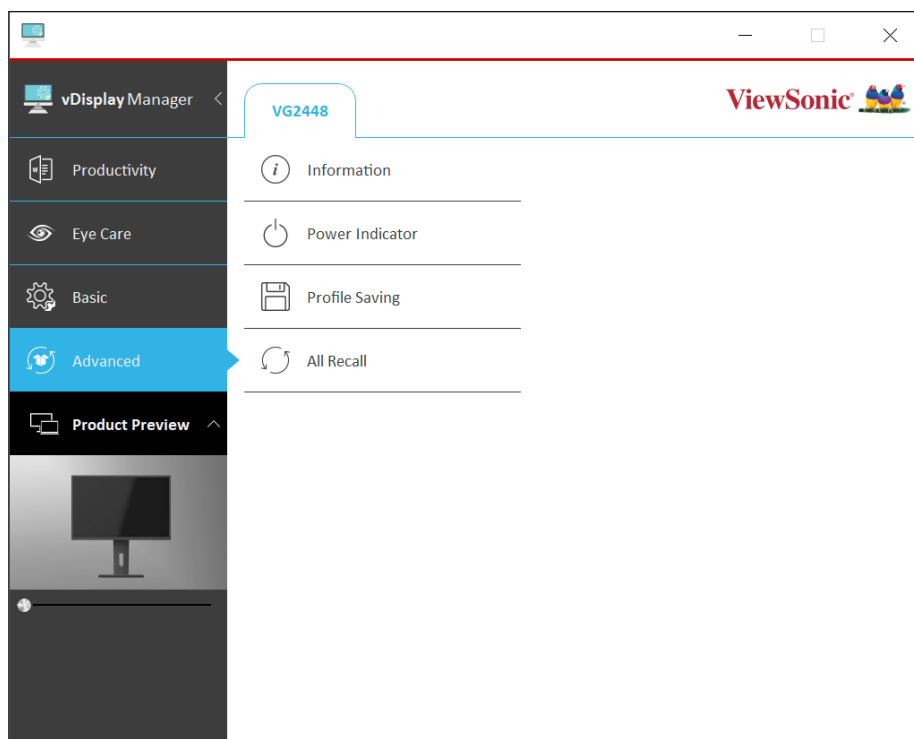
Menu Option	Description
Blue Light Filter	Adjusts the filter that blocks high-energy blue light for a more comfortable viewing experience.
Smart Backlight	Set your preferred brightness and contrast for different parts of the day. For more information, see the “Smart Backlight” section on page 28.

Basic Settings Menu



Menu Option	Description
Color/Image Adjust	Adjust Contrast, Brightness, and/or Sharpness.
ViewMode	Select one of the many preset viewing settings.
Audio Adjust	Increase, decrease, or mute the volume.
Input Select	Toggles between the various input options that are available for the monitor. "Auto Detect" can also be toggled On/Off.

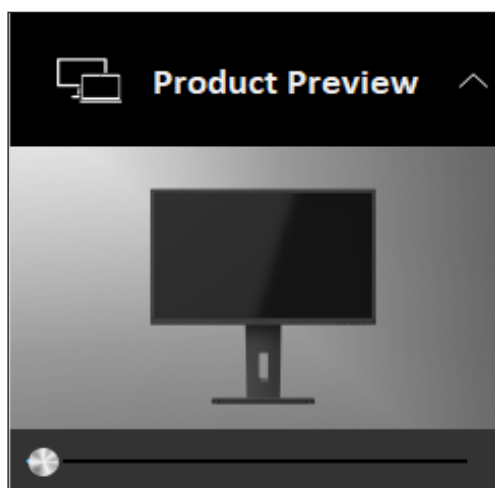
Advanced Settings Menu



Menu Option	Description
Information	Displays the Resolution, Timing mode, Model Name, Serial Number, Firmware Version, and an option to check for Firmware updates.
Power Indicator	Toggle the Power Indicator Light On/Off.
Profile Saving	Save preferred settings.
All Recall	Resets all the settings to default.

Product Preview

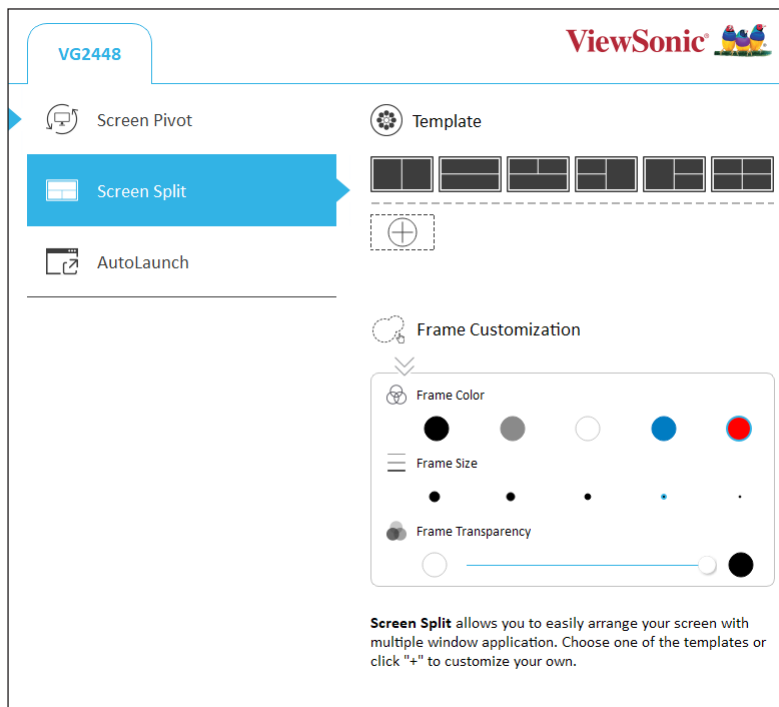
A 360° degree view of the selected monitor will be shown here. This sub-menu can be minimized as well.



> Advanced Features - VG Series

Screen Split

Allows the user to divide the screen into several windows. Some default templates are provided, however, customized templates can also be created and saved.



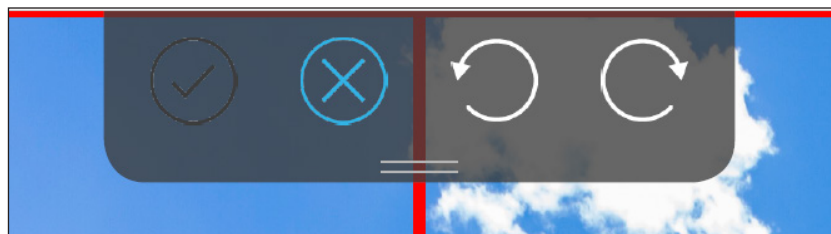
Additionally the frames of the templates can be customized by adjusting the Frame Color, Frame Size, and Frame Transparency.

To create a custom template:

1. Click the "+". 
2. Then draw your custom frames on-screen.

NOTE: Only vertical and horizontal lines can be drawn.

3. At anytime you can Save, Delete, Undo, or Redo with the icons at the top of the screen:



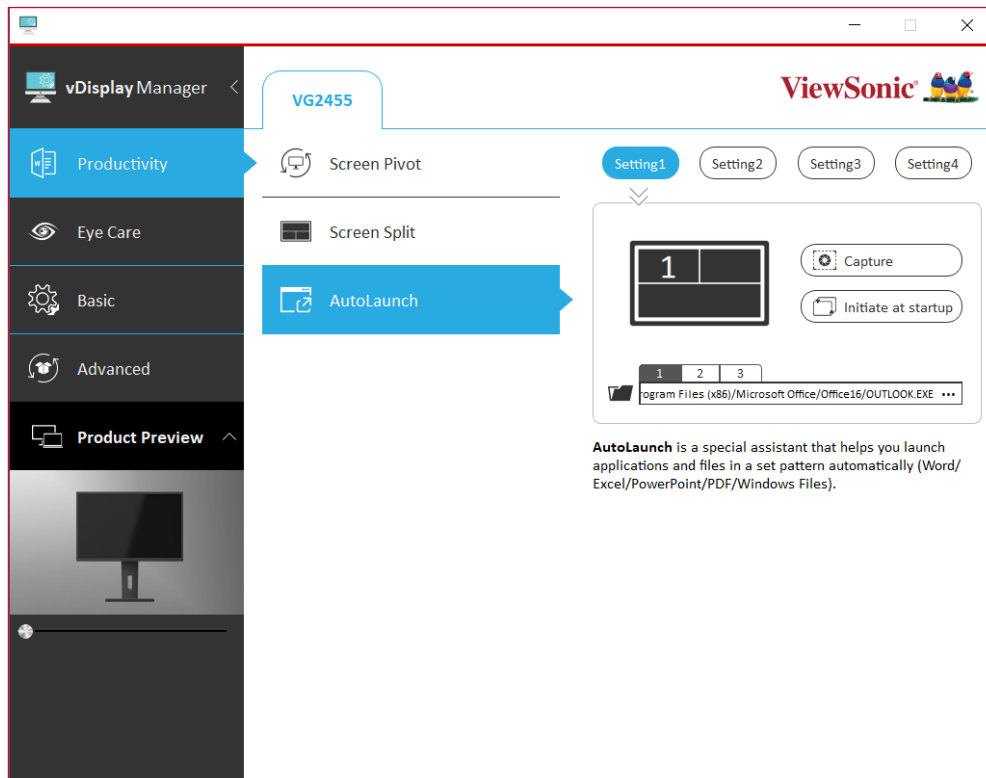
NOTE: You can Edit or Delete any custom template by right clicking on it in the template selection area.

AutoLaunch

The user can capture and automatically launch several windows in a set pattern with certain applications already open within them.

NOTE:

- AutoLaunch supports capturing Office 2010/2013/2016 (Word/Excel/PowerPoint), PDF, and Windows Files.
- If the file is not supported for direct capturing, the user can designate the file via "...".

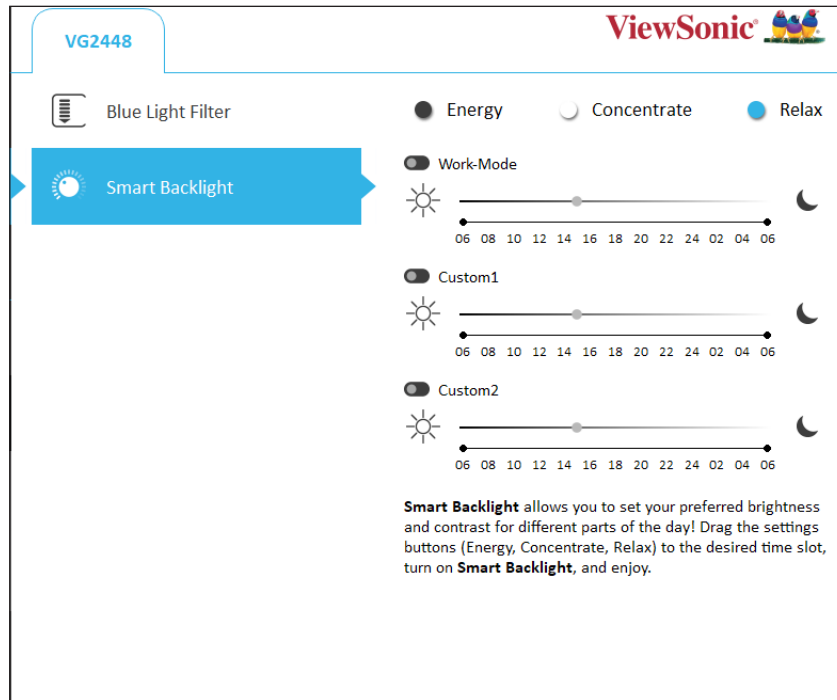


1. After using "Screen Split" to divide the screen, drag and drop your preferred applications into each frame.
2. Choose the preferred "Setting" (Setting 1/2/3/4).
3. Click "Capture" to save your screen setup. You can click "Initiate at Startup" to have your preferred screen setup load at startup.

NOTE: You can adjust which program opens in which window by clicking the "1, 2, .." and "...".

Smart Backlight

This feature allows the user to set preferred brightness and contrast for different times of the day.



1. Drag and drop the preferred settings button: Energy, Concentrate, and/or Relax, to the desired time slot.
NOTE: You can also right click on the time line to add the settings.
2. To adjust the settings button, left click on the word. Then you will be able to adjust the brightness and contrast.
3. Once your preferred settings are finalized, turn on Smart Backlight by left clicking the toggle switch.

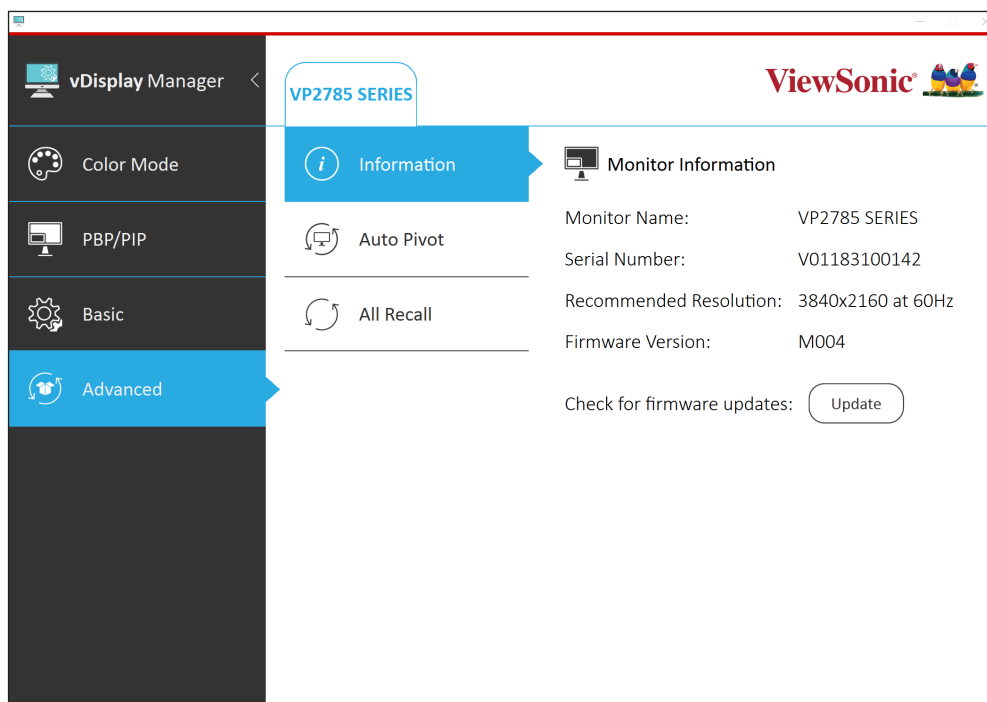
> Appendix

Firmware Update

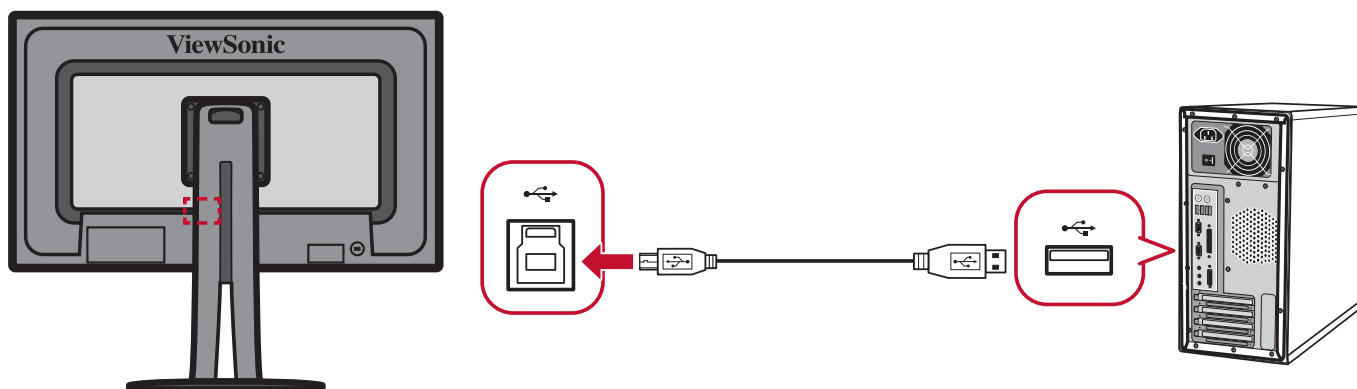
For the best display performance and to resolve any known issues, it is best to keep your monitor updated with the latest firmware version. With the USB cable and firmware update tool, you can easily update your monitor firmware any time.

To update the firmware, do the following:

1. Click on the **Advanced** sub-menu, then **Information**.



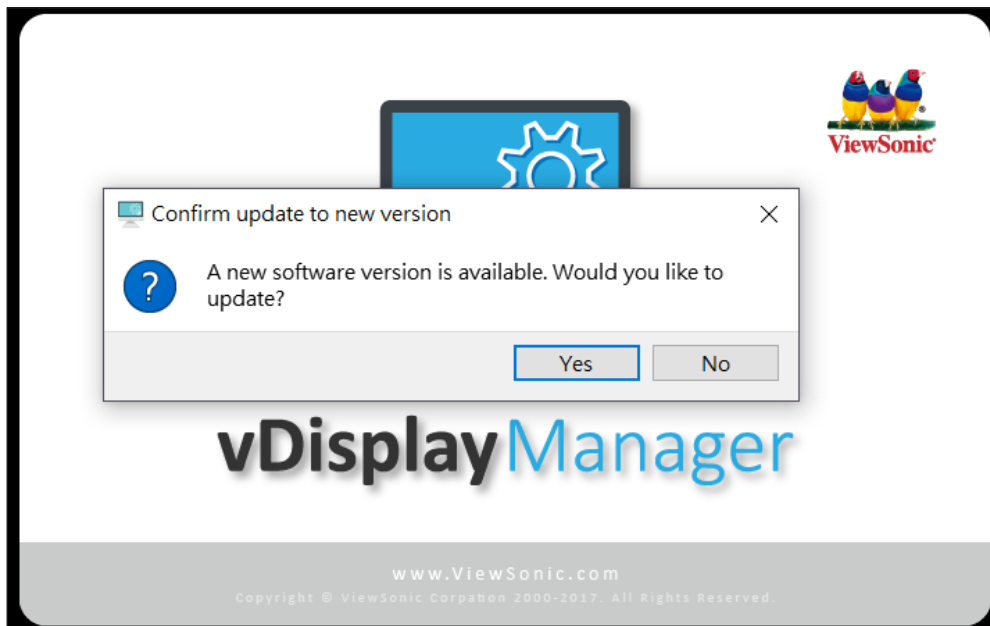
2. Connect the USB Type-B male cable (square with 2 cut corners) to the USB Type-B port of your monitor. Then connect the other end of the cable to the USB port of your computer.



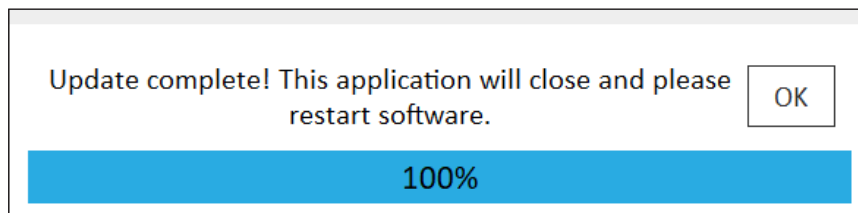
3. Click **Update** to upgrade your monitor's firmware, and wait until the upgrade process completes.

Software Update

If a new software version is available, a pop-up message will appear at the launch of vDisplay Manager as shown below:



After selecting **Yes** and successfully updating the software, the below message will appear:



NOTE: It is suggested that the user always updates to the latest software version available.

