

Get started with SureMDM for Windows 10



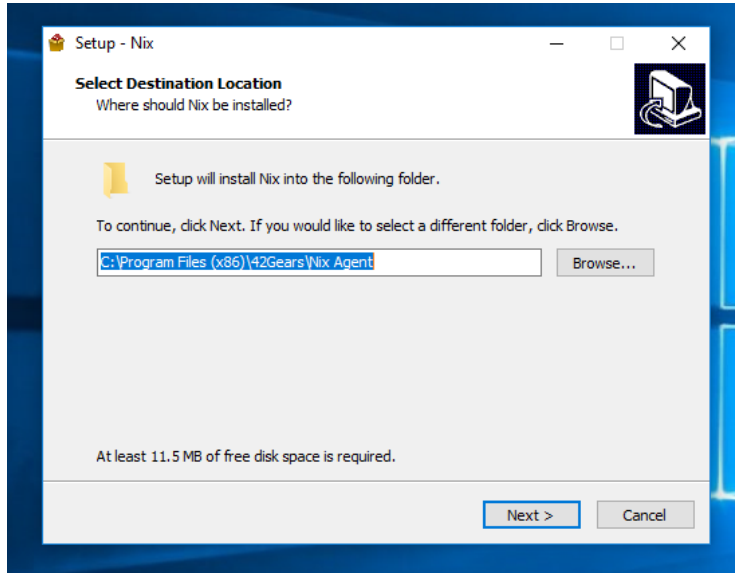
The information contained in these documents is confidential, privileged and only for the information of the intended recipient and may not be used, published or redistributed without the prior written consent of 42Gears Mobility Systems.

Table of Contents

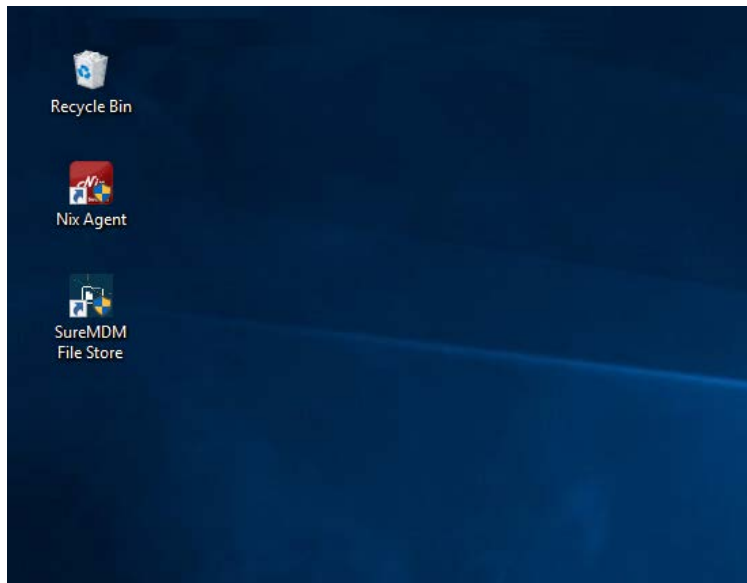
Setup SureMDM Nix Agent on Windows 10 device.....	1
Approve enrolled Windows 10 device on SureMDM Web Console	4

Setup SureMDM Nix Agent on Windows 10 device

1. Download **SureMDM Nix Agent** from [42Gears website](#)
2. Once downloaded, click and run **nix_installer_win.exe**



3. Once the setup and installation completes, **SureMDM Nix Agent** and **SureMDM File Store** shortcut icons will appear on the desktop

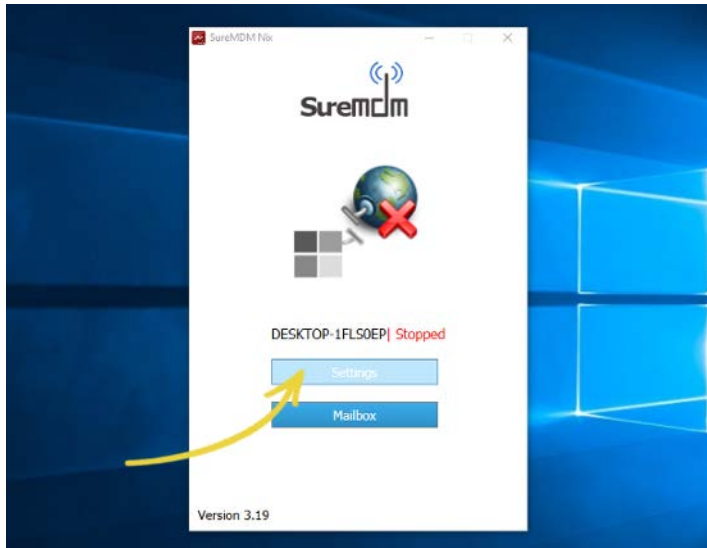


4. On **User Account Control** prompt, click **Yes** to allow SureMDM to make changes in the device
5. **SureMDM Nix Agent** will launch

6. **SureMDM Nix Agent** will automatically take **Computer name** as the default name and will show service status as **Stopped**



7. To start configuring **SureMDM Nix Agent**, click **Settings**

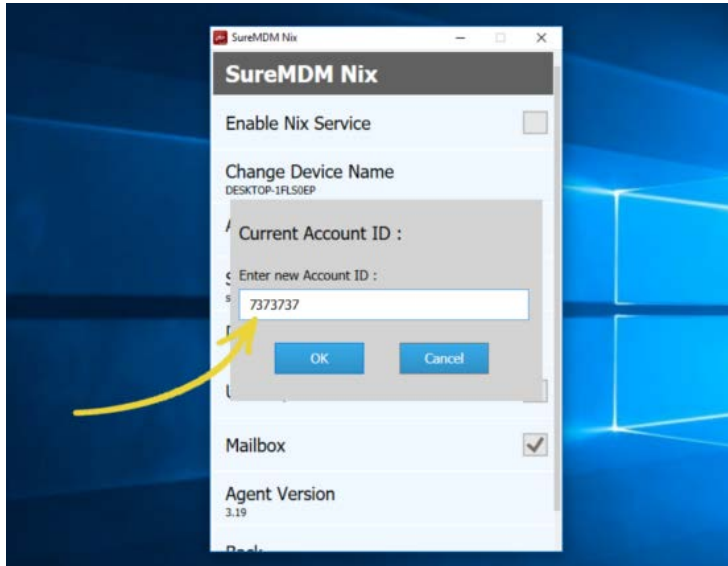


8. **SureMDM Nix Settings** has following options:

- **Enable Nix Service** – Use this check box to enable or disable Nix Service. Disable this option before making any changes in the settings and enable it once done.
- **Change Device Name** - SureMDM Nix Agent will automatically take Computer name as the default name. However, use this option to change it to a desired name.
- **Account ID** – The account the Windows 10 device is to be enrolled with will go in this field.
- **Device ID** – This ID will automatically populate once the device is enrolled with a SureMDM account.
- **Use https** – This option, once checked, will use secure protocol for communication between **SureMDM Nix Agent** and **SureMDM Web Console**.

- **Mailbox** – This option, once enabled, will mailbox feature on **SureMDM Nix Agent Home**. This mailbox can be used to send and receive mails from the administrator.

9. On **SureMDM Nix Settings** screen, click **Account ID** and enter the **Account ID**



10. Enable the Nix service by clicking on **Enable Nix Service** checkbox and click **Back**

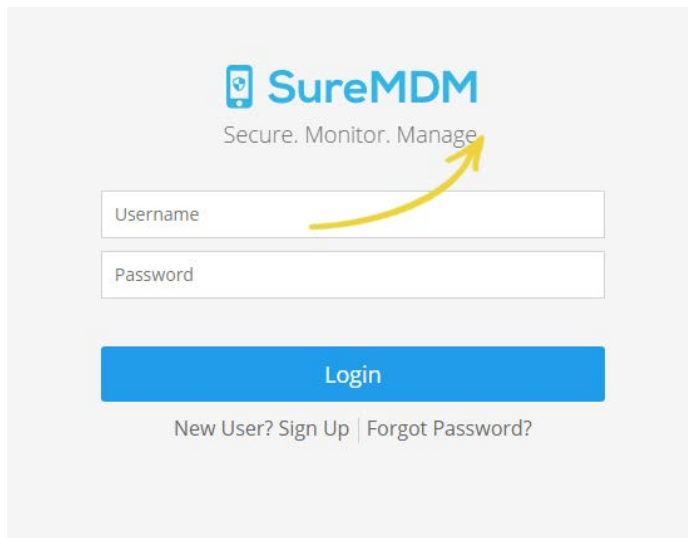


11. On successful completion of the steps, **SureMDM Nix Agent Home** should show status as **Online**



Approve enrolled Windows 10 device on SureMDM Web Console

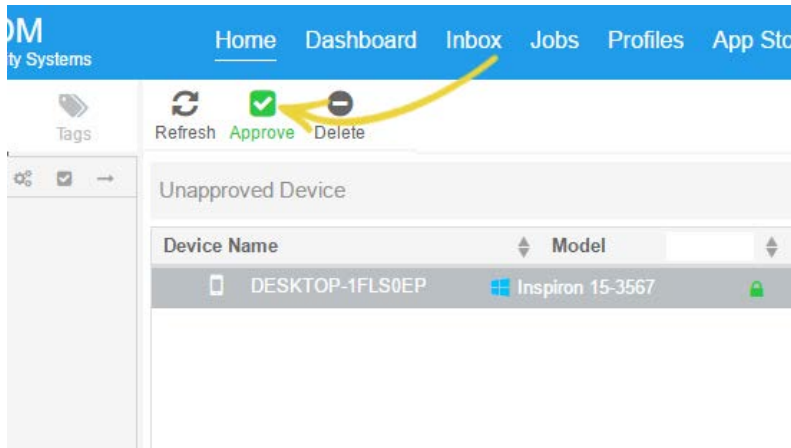
1. Login to [SureMDM Web Console](#)



2. On **SureMDM Home**, click **Unapproved** option at the bottom left of the console



3. Click to highlight the Windows 10 device under **Unapproved Device** section and click **Approve**



4. The approved device will start reflecting under **Device List** section and it is ready to be managed

