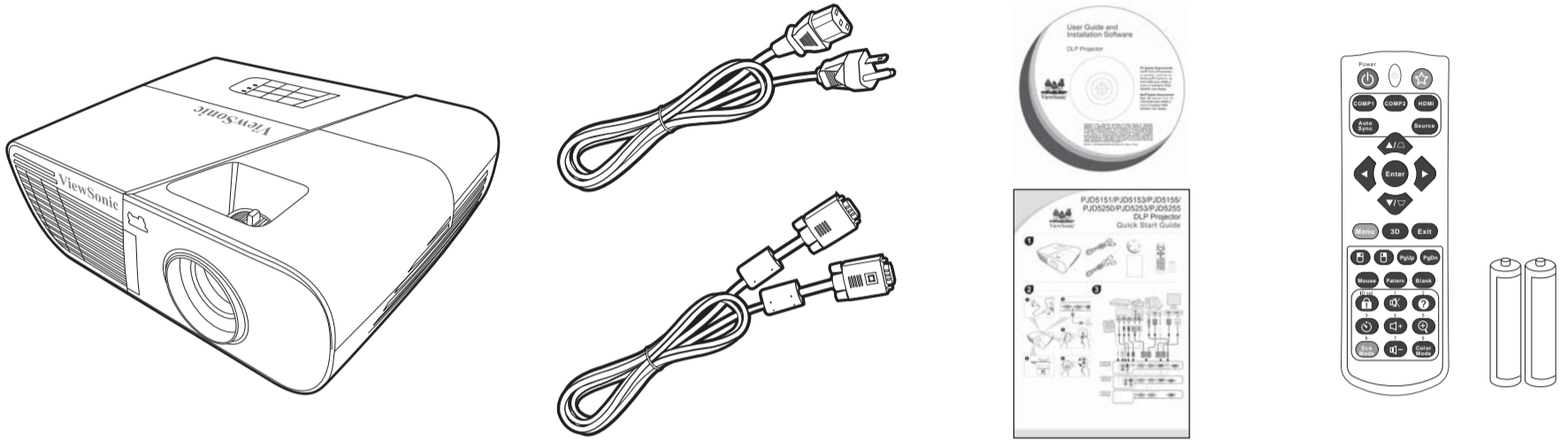


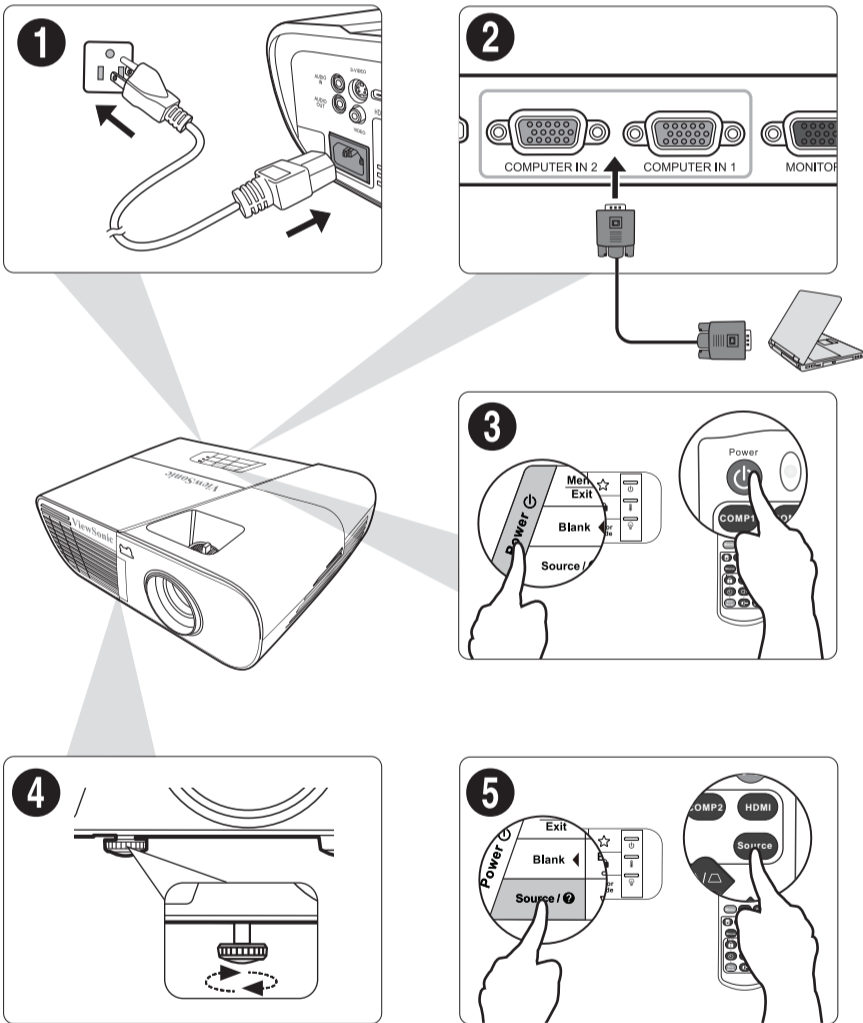


PJD5151/PJD5153/PJD5155/ PJD5250/PJD5253/PJD5255 DLP Projector Quick Start Guide

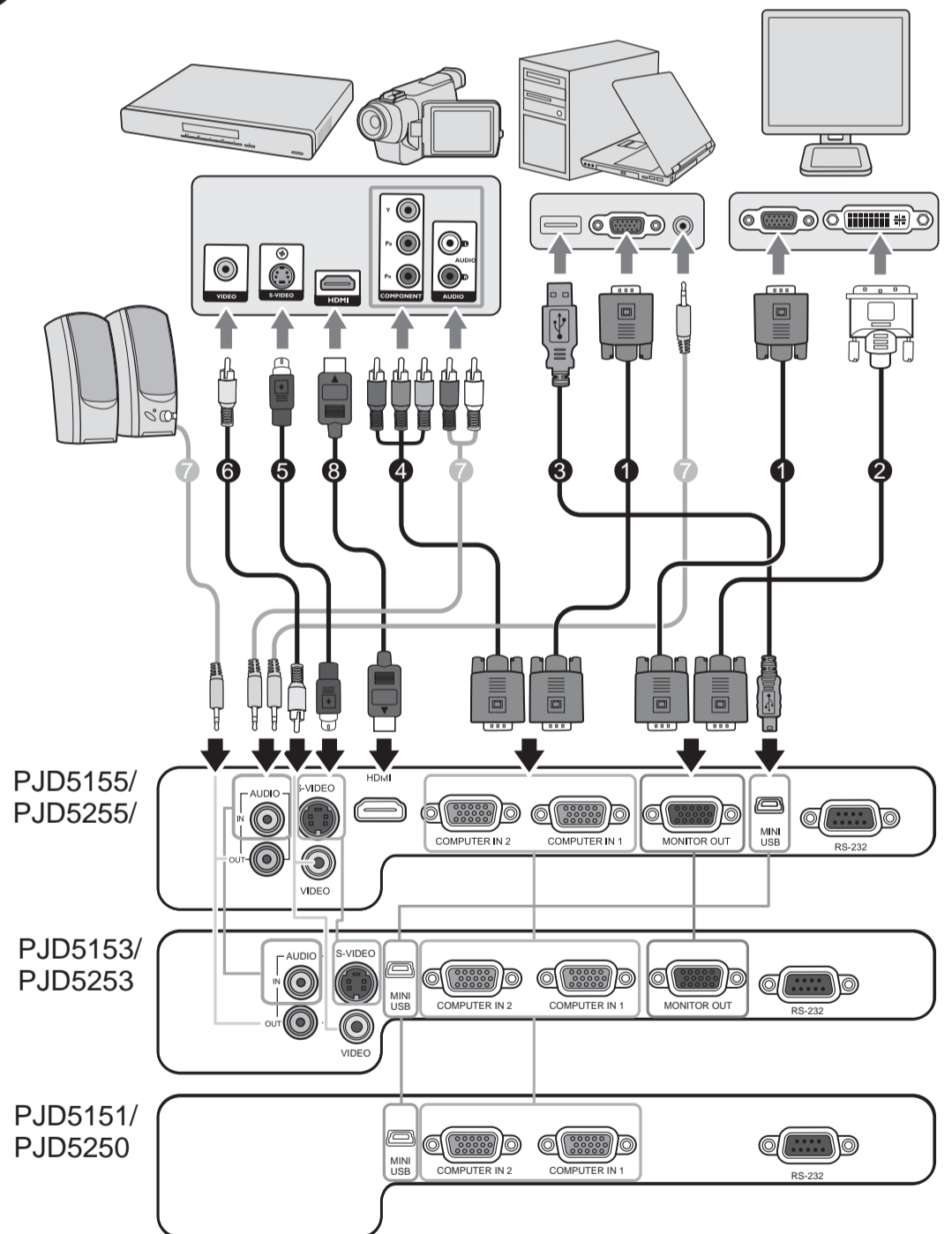
1



2



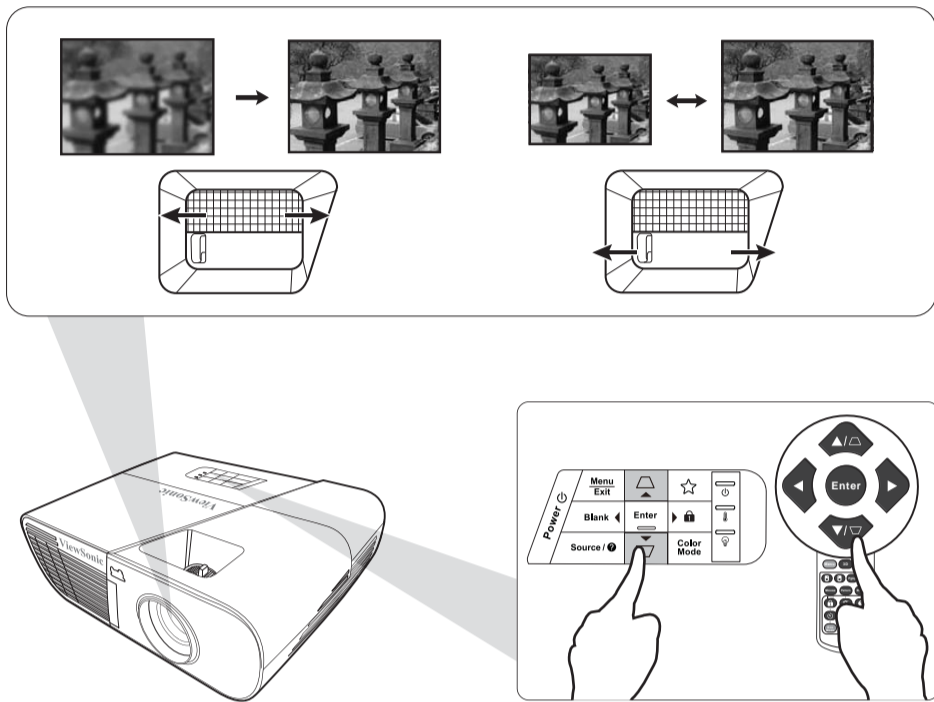
3





PJD5151/PJD5153/PJD5155/ PJD5250/PJD5253/PJD5255 DLP Projector Quick Start Guide

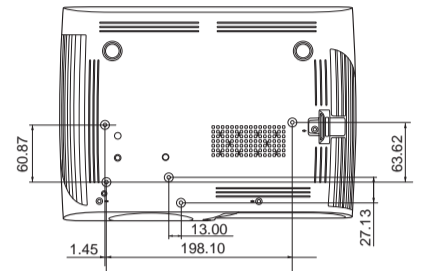
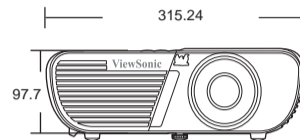
4



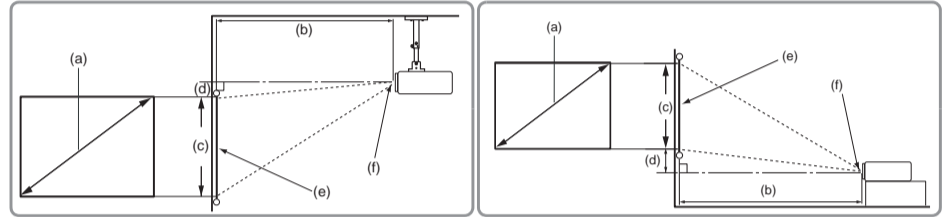
5

Screws: M4 x 8 (Max. L = 8 mm)

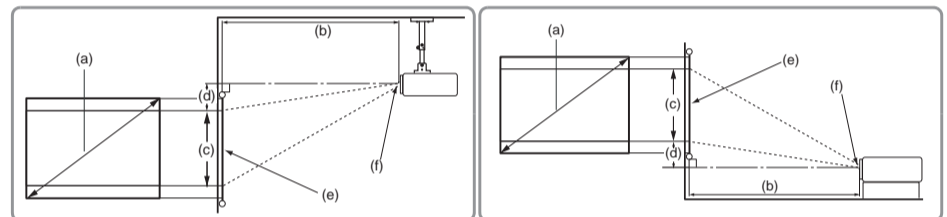
Unit: mm



• 16:10 image on a 16:10 screen



• 16:9 image on a 4:3 screen



(e): Screen (f): Center of lens

(a) Screen Size [inch (m)]	4:3 image on a 4:3 Screen				16:9 image on a 4:3 Screen			
	(b) Projection distance [m (inch)]		(c) Image height [cm (inch)]	(d) Vertical offset [cm (inch)]	(b) Projection distance [m (inch)]		(c) Image height [cm (inch)]	(d) Vertical offset [cm (inch)]
	min.	max.			min.	max.		
30 (0.8)	1.1 (45)	1.2 (49)	46 (18)	4.6 (1.8)	1.1 (45)	1.2 (49)	34 (14)	10.3 (4.1)
40 (1.0)	1.5 (59)	1.7 (65)	61 (24)	6.1 (2.4)	1.5 (59)	1.7 (65)	46 (18)	13.7 (5.4)
50 (1.3)	1.9 (74)	2.1 (82)	76 (30)	7.6 (3.0)	1.9 (74)	2.1 (82)	57 (23)	17.1 (6.8)
60 (1.5)	2.3 (89)	2.5 (98)	91 (36)	9.1 (3.6)	2.3 (89)	2.5 (98)	69 (27)	20.6 (8.1)
70 (1.8)	2.6 (104)	2.9 (114)	107 (42)	10.7 (4.2)	2.6 (104)	2.9 (114)	80 (32)	24.0 (9.5)
80 (2.0)	3.0 (119)	3.3 (131)	122 (48)	12.2 (4.8)	3.0 (119)	3.3 (131)	91 (36)	27.4 (10.8)
90 (2.3)	3.4 (134)	3.7 (147)	137 (54)	13.7 (5.4)	3.4 (134)	3.7 (147)	103 (41)	30.9 (12.2)
100 (2.5)	3.8 (149)	4.2 (163)	152 (60)	15.2 (6.0)	3.8 (149)	4.2 (163)	114 (45)	34.3 (13.5)
120 (3.0)	4.5 (178)	5.0 (196)	183 (72)	18.3 (7.2)	4.5 (178)	5.0 (196)	137 (54)	41.1 (16.2)
150 (3.8)	5.7 (223)	6.2 (245)	229 (90)	22.9 (9.0)	5.7 (223)	6.2 (245)	171 (68)	51.4 (20.3)
200 (5.1)	7.5 (297)	8.3 (327)	305 (120)	30.5 (12.0)	7.5 (297)	8.3 (327)	229 (90)	68.6 (27.0)
250 (6.4)	9.4 (371)	10.4 (409)	381 (150)	38.1 (15.0)	9.4 (371)	10.4 (409)	286 (113)	85.7 (33.8)
300 (7.6)	11.3 (446)	12.5 (490)	457 (180)	45.7 (18.0)	11.3 (446)	12.5 (490)	343 (135)	102.9 (40.5)



<http://www.viewsonic.com/support/>



中国
<http://www.viewsonic.com.cn>
电话: 4008 988 588

香港
<http://www.hk.viewsonic.com>
电话: 852 3102 2900

澳門
<http://www.hk.viewsonic.com>
电话: 853 2870 0303

台灣
<http://www.viewsonic.com.tw>
电话: 0800 061 198

한국
<http://ap.viewsonic.com/kr/>
Phone: 080 333 2131

Singapore/Malaysia/Thailand
<http://www.viewsonic.com.sg>
Phone: 65 6461 6044

India
<http://www.in.viewsonic.com>
Phone: 1800-419-0959

United States
<http://www.viewsonic.com>
Phone: 1-800-688-6688 (Toll-Free)
1-424-233-2530 (Toll)

Canada
<http://www.viewsonic.com>
Phone: 1-866-463-4775 (Toll-Free)
1-424-233-2533 (Toll)

Europe
<http://www.viewsoniceurope.com>
<http://www.viewsoniceurope.com/uk/support/call-desk/>

Australia/New Zealand
<http://www.viewsonic.com.au>
Phone: 1800 880 818 (AUS)
0800 008 822 (NZ)

South Africa
<http://ap.viewsonic.com/za/>

Latin America (Chile)
<http://www.viewsonic.com/la/>
Phone: 1230-020-7975

Latin America (Mexico)
<http://www.viewsonic.com/la/>
Phone: 001-8882328722

Latin America (Peru)
<http://www.viewsonic.com/la/>
Phone: 0800-54565

Latin America (Argentina)
<http://www.viewsonic.com/la/>
Phone: 0800-4441185

Puerto Rico & Virgin Islands
<http://www.viewsonic.com>
Phone: 1-800-688-6688 (English)
1-866-379-1304 (Español)