

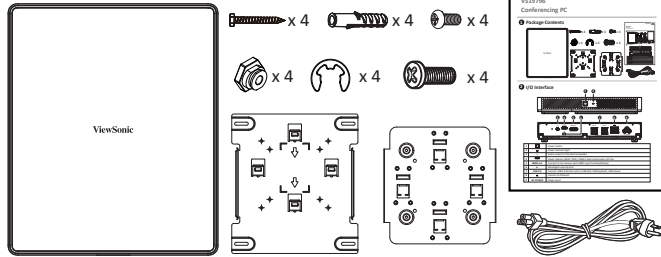
MPC310

VS19796

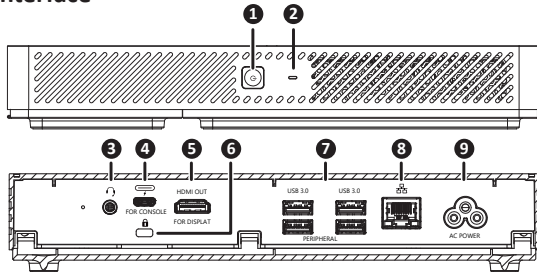
Conferencing PC



1 Package Contents

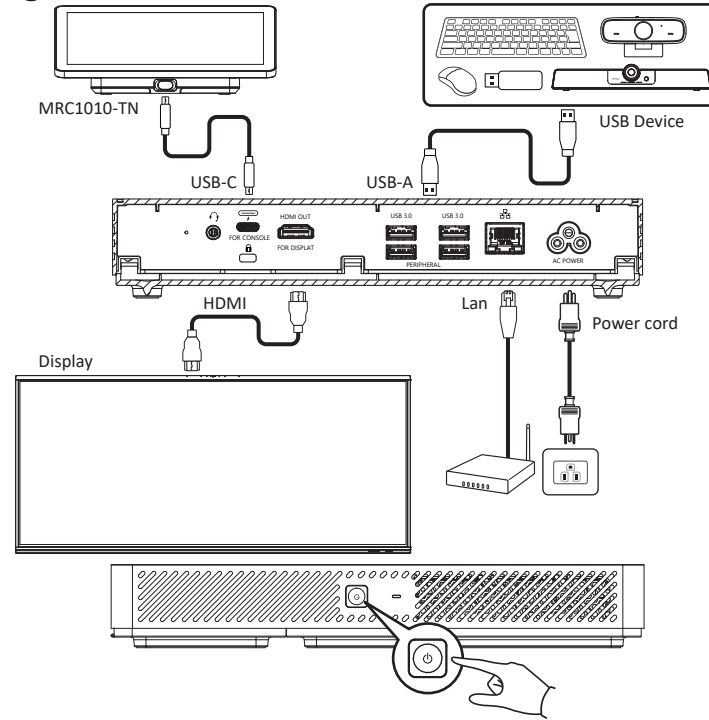


2 I/O Interface

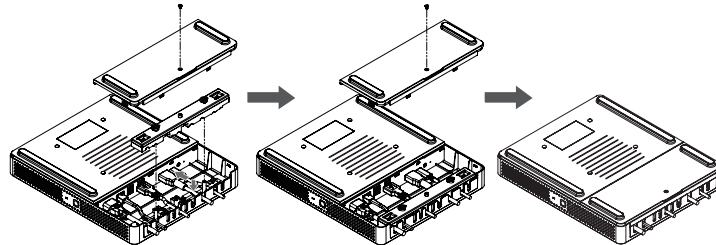


1		Power button
2		Power indicator light
3		Audio output to the external speaker
4		Power delivery (MAX: 20W), USB3.0 data transmission, DP Out.
5		Connect to the devices with HDMI input function(display).
6		Kensington security lock
7		Connect USB3.0 devices such as USB disk, USB keyboard, USB mouse.
8		Connect to Ethernet
9		Power input

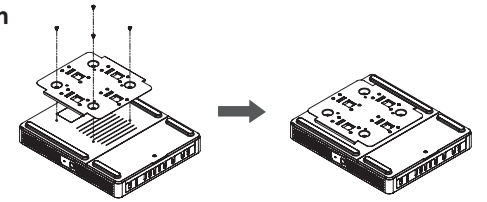
3 Connection



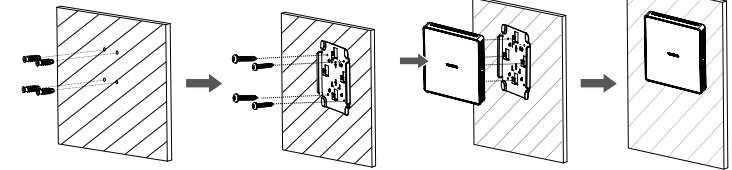
4 Installation



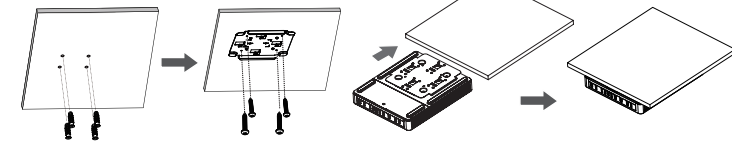
4 Installation



5 Mount on Wall



6 Mount under table



7 Mount on Trolley

