

ViewSonic®



PD1010

Pen Display

User Guide

Model No. VS15039

Compliance Information

For U.S.A.

This device complies with part 15 of FCC Rules. Operation is subject to the following two conditions: (1) this device may not cause harmful interference, and (2) this device must accept any interference received, including interference that may cause undesired operation.

This equipment has been tested and found to comply with the limits for a Class B digital device, pursuant to part 15 of the FCC Rules. These limits are designed to provide reasonable protection against harmful interference in a residential installation. This equipment generates, uses, and can radiate radio frequency energy, and if not installed and used in accordance with the instructions, may cause harmful interference to radio communications. However, there is no guarantee that interference will not occur in a particular installation. If this equipment does cause harmful interference to radio or television reception, which can be determined by turning the equipment off and on, the user is encouraged to try to correct the interference by one or more of the following measures:

- Reorient or relocate the receiving antenna.
- Increase the separation between the equipment and receiver.
- Connect the equipment into an outlet on a circuit different from that to which the receiver is connected.
- Consult the dealer or an experienced radio/TV technician for help.

Warning: You are cautioned that changes or modifications not expressly approved by the party responsible for compliance could void your authority to operate the equipment.

For Canada

CAN ICES-3 (B)/NMB-3(B)

CE Conformity for European Countries

CE The device complies with the EMC Directive 2004/108/EC and Low Voltage Directive 2006/95/EC.

Following information is only for EU-member states:

The mark shown to the right is in compliance with the Waste Electrical and Electronic Equipment Directive 2002/96/EC (WEEE).



The mark indicates the requirement NOT to dispose the equipment as unsorted municipal waste, but use the return and collection systems according to local law.

If the batteries, accumulators and button cells included with this equipment, display the chemical symbol Hg, Cd, or Pb, then it means that the battery has a heavy metal content of more than 0.0005% Mercury or more than, 0.002% Cadmium, or more than 0.004% Lead.



Important Safety Instructions

1. DO NOT place objects on top of the device, as objects may scratch the screen.
2. DO NOT expose the device to dirty or dusty environments.
3. DO NOT place the device on an uneven or unstable surface.
4. DO NOT insert any foreign objects into the device.
5. DO NOT expose the device to strong magnetic or electrical field.
6. DO NOT expose the device to direct sunlight as it can damage the LCD Screen. Keep it away from heat sources.
7. DO NOT use the device in the rain.
8. Please check with your Local Authority or retailer for proper disposal of electronic products.
9. The device may produce some heat during normal operation or charging. To prevent discomfort or injury from heat exposure, DO NOT leave the device on your lap.
10. POWER INPUT RATING: Refer to the rating label on the device. Only use accessories specified by the manufacturer.
11. DO NOT use any sharp object to tap the screen.
12. Clean the touch screen with a soft cloth. If needed, dampen the cloth slightly before cleaning. Never use abrasives or cleaning solutions.
13. Disconnect the device from an electrical outlet and power off before cleaning the device.
14. DO NOT disassemble the device. Only a certified service technician should perform repair.
15. Users have to use the connection to USB interfaces with USB 2.0 version or higher.

Declaration of RoHS Compliance

This product has been designed and manufactured in compliance with Directive 2011/65/EU of the European Parliament and the Council on restriction of the use of certain hazardous substances in electrical and electronic equipment (RoHS Directive) and is deemed to comply with the maximum concentration values issued by the European Technical Adaptation Committee (TAC) as shown below:

Substance	Proposed Maximum Concentration	Actual Concentration
Lead (Pb)	0.1%	< 0.1%
Mercury (Hg)	0.1%	< 0.1%
Cadmium (Cd)	0.01%	< 0.01%
Hexavalent Chromium (Cr ⁶⁺)	0.1%	< 0.1%
Polybrominated biphenyls (PBB)	0.1%	< 0.1%
Polybrominated diphenyl ethers (PBDE)	0.1%	< 0.1%

Certain components of products as stated above are exempted under the Annex of the RoHS Directives as noted below:

Examples of exempted components are:

1. Mercury in compact fluorescent lamps not exceeding 5 mg per lamp and in other lamps not specifically mentioned in the Annex of RoHS Directive.
2. Lead in glass of cathode ray tubes, electronic components, fluorescent tubes, and electronic ceramic parts (e.g. piezoelectronic devices).
3. Lead in high temperature type solders (i.e. lead-based alloys containing 85% by weight or more lead).
4. Lead as an allotting element in steel containing up to 0.35% lead by weight, aluminium containing up to 0.4% lead by weight and as a cooper alloy containing up to 4% lead by weight.

Copyright Information

Copyright © ViewSonic® Corporation, 2013. All rights reserved.

ViewSonic and the three birds logo are registered trademarks of ViewSonic Corporation.

Disclaimer: ViewSonic Corporation shall not be liable for technical or editorial errors or omissions contained herein; nor for incidental or consequential damages resulting from furnishing this material, or the performance or use of this product.

In the interest of continuing product improvement, ViewSonic Corporation reserves the right to change product specifications without notice. Information in this document may change without notice.

No part of this document may be copied, reproduced, or transmitted by any means, for any purpose without prior written permission from ViewSonic Corporation.

Product Registration

To meet your future needs, and to receive any additional product information as it becomes available, please register your product on the Internet at: www.viewsonic.com.

For Your Records

Product Name:	PD1010 ViewSonic Pen Display
Model Number:	VS15039
Document Number:	PD1010_UG_ENG Rev. 1A 03-28-13
Serial Number:	_____
Purchase Date:	_____

Product disposal at end of product life

ViewSonic respects the environment and is committed to working and living green. Thank you for being part of Smarter, Greener Computing. Please visit ViewSonic website to learn more.

USA & Canada: <http://www.viewsonic.com/company/green/recycle-program/>

Europe: <http://www.viewsoniceurope.com/uk/support/recycling-information/>

Taiwan: <http://recycle.epa.gov.tw/recycle/index2.aspx>

Contents

Compliance Information.....	i
Important Safety Instructions.....	iii
Declaration of RoHS Compliance.....	iv
Copyright Information	v
Product Registration	v
1. Introduction.....	1
1.1 Packing List	1
1.2 Product Overview	1
2. Installing and setup.....	3
2.1 Drivers Installing.....	3
2.2 Display area setup.....	6
2.3 Handwriting Area Mapping	7
2.4 Additional Touch Function Settings	9
3. Troubleshooting	11
3.1 Monitor problems.....	11
3.2 Interactive Pen Problems	12
4. Product Specification.....	13
4.1 Monitor	13
4.2 Interactive Pen	14
5. Appendix.....	15
5.1 Replacing the Pen tip	15
Customer Support	16
Limited Warranty	17

1. Introduction

1.1 Packing List

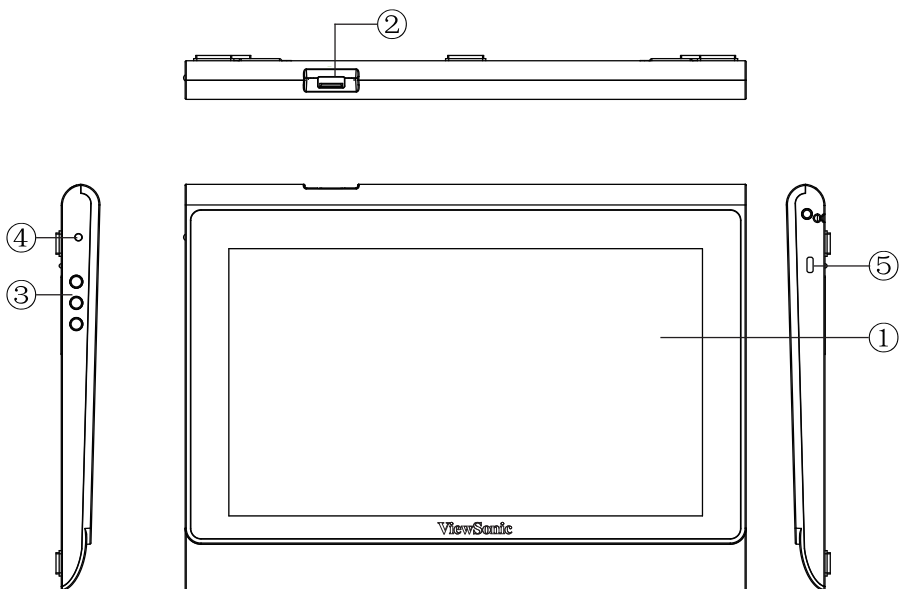
After unpacking, make sure that all of the following contents are included:

- Pen Display
- Pen Kits Package (including pen tip and stand)
- USB Cable
- Quick Start Guide
- Driver and Software CD

If there is a defect or missing part, please contact the agency where you purchased the product.

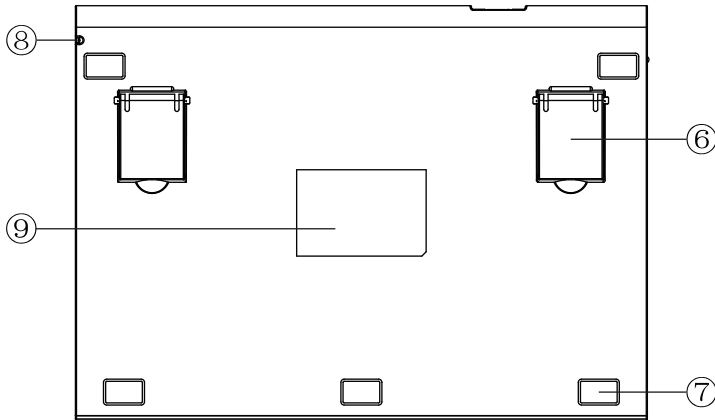
1.2 Product Overview

1.2.1 Front and Side View



- ① Display and pen touch area
- ② USB port: Signal input and power
- ③ Control key buttons: Screen power, Brightness up, and Brightness down.
- ④ Power indication: Red for screen off; Amber for initiation; Green for screen on.
- ⑤ Kensington lock

1.2.2 Rear View



- ⑥ Stand (x2)
- ⑦ Foot rubber (x5)
- ⑧ Interactive pen holder strap
- ⑨ Rear label

Caution: Avoid the risk of electric shock. Do not open the shell by yourself..
Please contact maintenance personnel if any problem countered.

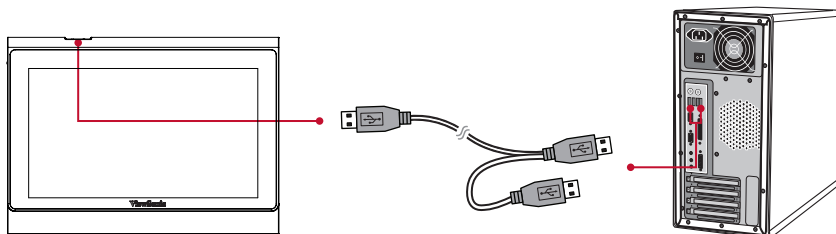
1.2.3 Interactive Pen

Interactive pen uses the electromagnetic resonance technology, and is battery free.

2. Installing and setup

2.1 Drivers Installing

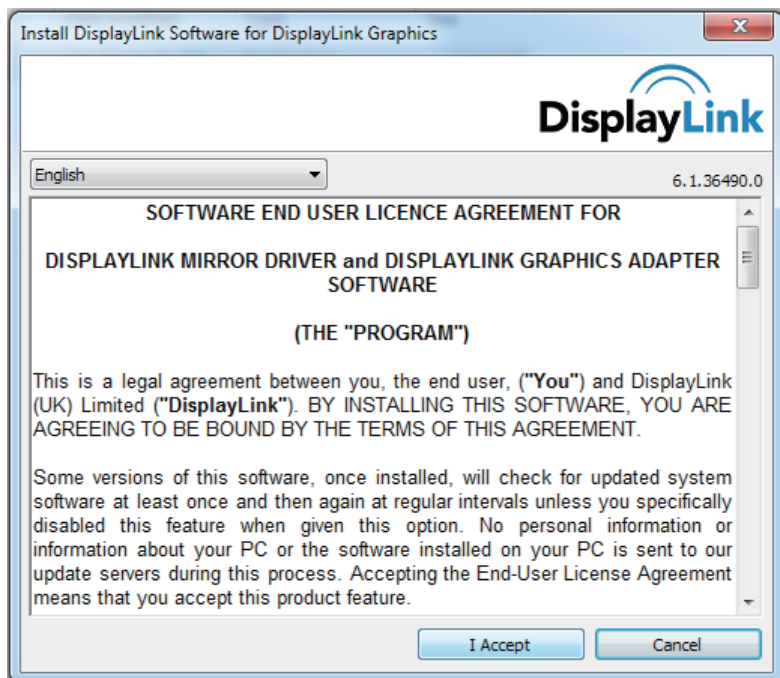
Connect the device with PC/ NB through the supplied USB cable as below. The screen is black and the LED indicator shows red.



Note: When connecting the device to a PC/NB, plug in both of the USB connectors to make sure there is sufficient power.

2.1.1 Install driver and software for DisplayLink Graphics

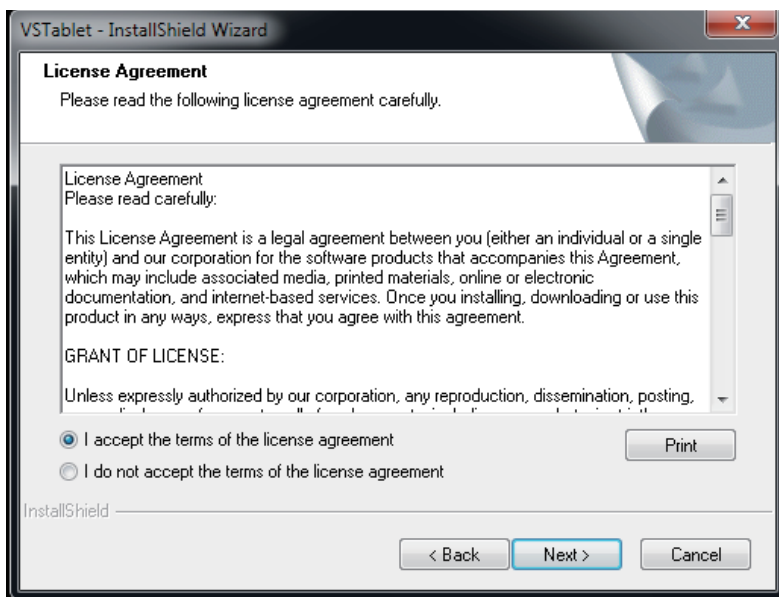
- 1) Open Drivers and Bundled Software CD, and click "**DisplayLink-xx.exe**" to start the installation on Windows or "**Displaylink Installer-xx.dmg**" on Mac OS.



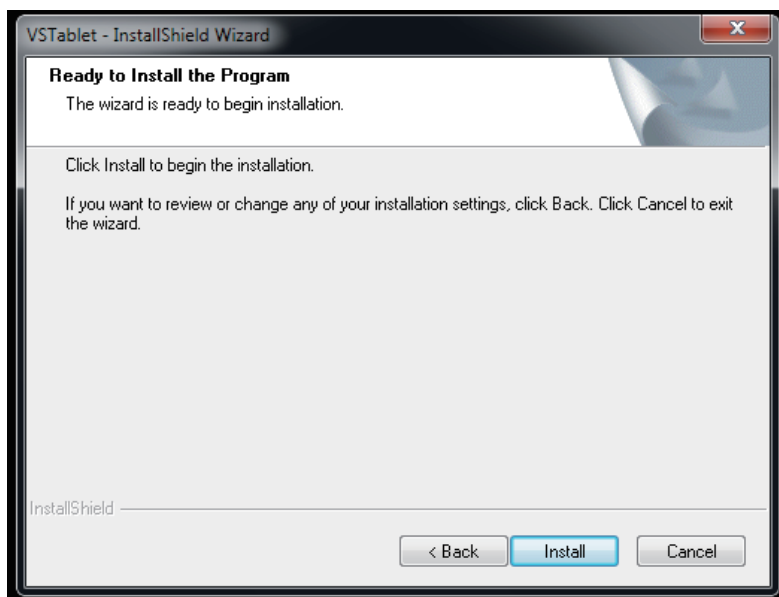
- 2) Select **Language** - Click **I Accept** to start installing. Then the installation will be completed automatically.

2.1.2 Handwriting driver installing

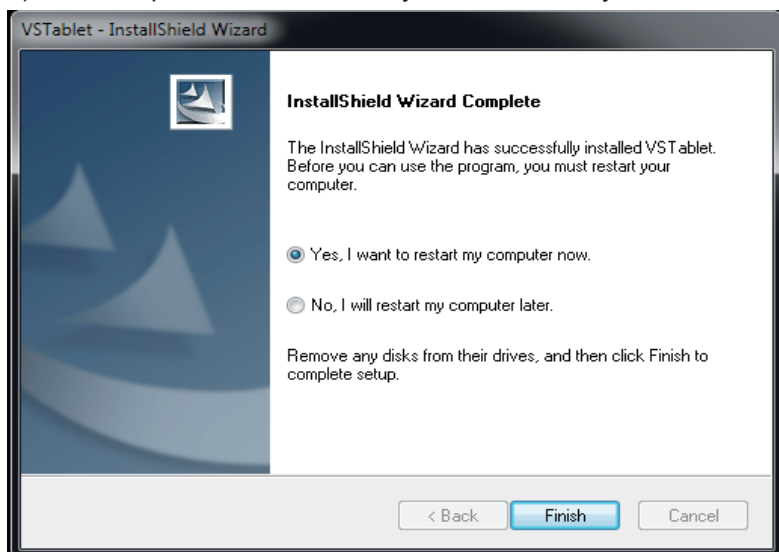
- 1) Open Driver CD, and click "**viewsonic-xx.exe**" to start installation on Windows or "**installxx.dmg**" on Mac OS), **VSTablet InstallShield** will appear the launch page.



2) Then do the all steps according setting guide.



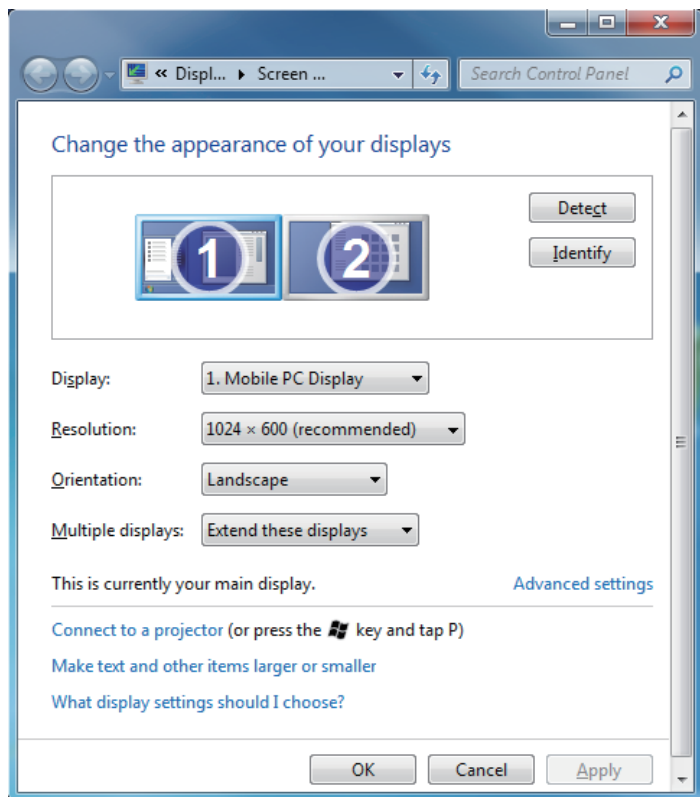
3) After complete the installation, you need restart your PC.



2.2 Display area setup

Setup environment for Windows 7/8

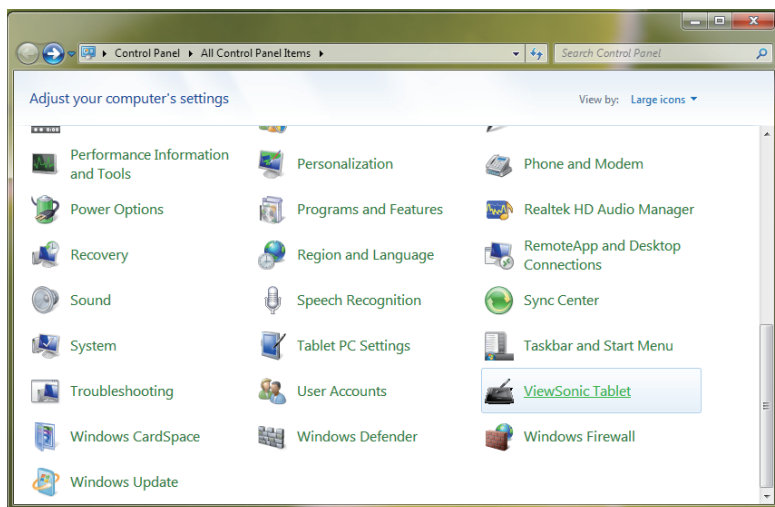
To access the setup window, click **Start** → **Control Panel** → **Display** → **Adjust Resolution**.



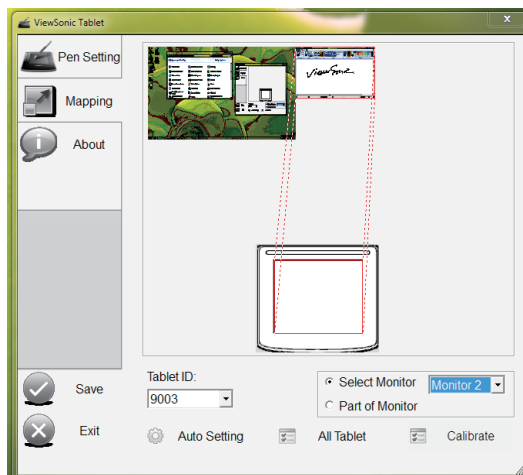
- 1) When a Pen Display device installed, you can find one more option item which is Multiple displays.
- 2) Multiple displays provide 4 options for the digitizer display:
 - a. Duplicate these displays: a mirror display mode, it will change to a same resolution of both of main and duplicate monitors.
 - b. Extend these displays: Extend display to right (default setting).
 - c. Show desktop only on 1: only show desktop on main monitor.
 - d. Show desktop only on 2: only show desktop on extend monitor.
- 3) Select **Extend these displays** then click **OK** to exit.

2.3 Handwriting Area Mapping

1) Open Control Panel of Windows and click ViewSonic Tablet

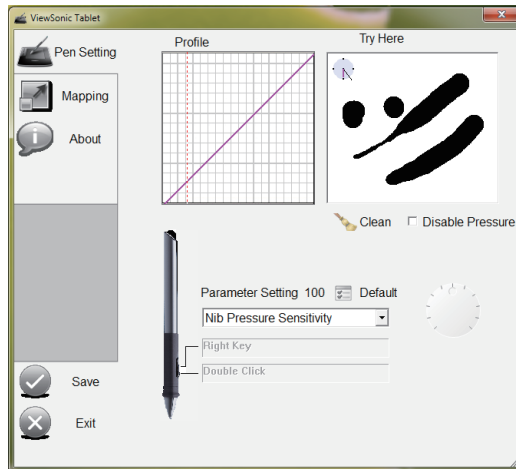


2) Enter Mapping and set the Select Monitor as Monitor 2



Note: The pen accuracy has been finetuned in factory. If there is any calibration need, click the Clibrate for manual adjustment.

- 3) Draw the dialog box to the screen of Pen Display (extended display) and try the pressure sensitivity in Try Here window of Pen Setting. The sensitivity parameter can be adjusted by the wheel beside.



- 4) Save then Exit to complete the setting.

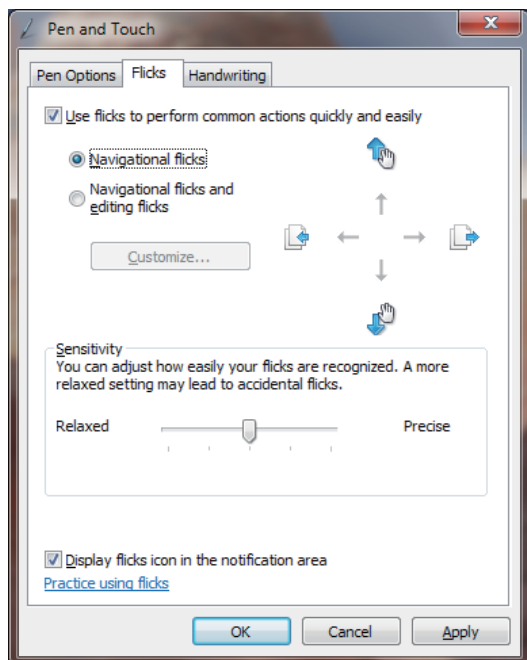
Note: The pen support multiple levels pressure. To draw with pressure, select a pressure-sensitive tool from your application's tool palette, when you press your pen tip lightly, it will show softer color or thin lines, and press harder for dense color or thick lines.

2.4 Additional Touch Function Settings

This section covers all of the built-in touch functions for Windows 7 and 8 operating systems.

2.4.1 Pen and Touch

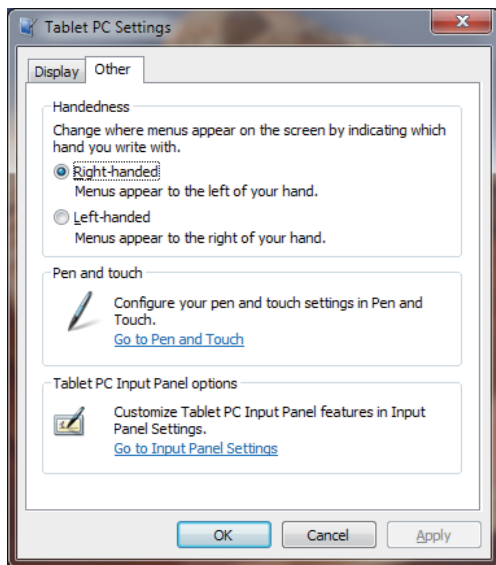
Click **Start** icon → **Control Panel** → **Pen and Touch**.



- a. Pen Options: Use the pen to interact with items on the screen. You can adjust the settings for each pen action and pen buttons.
- b. Flicks: Use flicks to perform actions quickly and easily with your tablet pen.
- c. Handwriting: You can select "Use automatic learning" or "Don't use automatic learning and delete any previously collected data".

2.4.2 Tablet PC Setting

Click **Start** icon → **Control Panel** → **Tablet PC Settings** → click **Other** tab
→ click **Go to Input Panel Settings**.



These Settings allow you to customize the Tablet PC Input Panel functions listed below:

- **Handwriting:** Ink thickness and writing line distance settings.
- **Ink to text conversion:** Handwriting recognition settings.
- **Text completion:** AutoComplete and Predictive settings.
- **Advanced:** Gesture settings.

3. Troubleshooting

3.1 Monitor problems

Problems	Suggested action
No picture	<ul style="list-style-type: none">* Check USB cable should be completely connected to the computer and monitor.* Try another USB port of PC.* Check computer whether are in dormancy mode. Press keyboard or move the mouse to reactivate the system.* Press Screen power button to make sure the screen turned on.* Try adjusting the brightness.* Check that the computer is switched on.* If you use laptop PC, check that the external (RGB) output is selected.* Check that the DisplayLink Driver has been installed.
Dark screen	<ul style="list-style-type: none">* Adjust the brightness control.* Backlight degradation after being used for a long period may cause lower screen brightness.
Picture noise	<ul style="list-style-type: none">* Other electrical devices may cause electrical interference.
Picture is fuzzy	<ul style="list-style-type: none">* Optimal picture quality is at native 1024 x 600 resolution.

3.2 Interactive Pen Problems

Problems	Suggested action
The pen is no function	<ul style="list-style-type: none">* Try using mouse to double check, if mouse also no function, please restarting your computer or your application.* Try to reinstall the driver.
Pen tip is too short	<ul style="list-style-type: none">* Check whether the pen tip is too short. If yes, replace the pen nib.
The cursor move incorrectly	<ul style="list-style-type: none">* Eliminate interference from nearby electrical devices.* Try restarting your computer for double check.* Make sure the two-end side of USB cable is connected to PC simultaneously.

Caution: Avoid the risk of electric shock. Do not open the shell by yourself. Please contact the local technical support and/or agency where you purchased the product, if you need further support.

4. Product Specification

4.1 Monitor

Display	
Type	10.1" TFT LCD, LED backlight, tablet module built in.
Resolution	1024 x 600
Brightness	200 cd/m ² (typical)
View angle	H 120°, V 80°
Response time	16 ms (G-to-G)
Connector	
USB	USB x1
User Controls	
Control keys	Screen power, Brightness up, Brightness down
Power supply	
Input	DC5V/0.8A, USB Powered
Power consumption	Tablet monitor mode: On 4W, Sleep <0.7W Digitizer mode: <0.4W
Physical	
Unit dimension	265 mm x 192 mm x 18mm
Unit weight	Net 0.65kg, Gross 1.1kg
Environmental	
Temperature range	Operating: 0°C ~ +40°C Storage: -20°C ~ +60°C
Relative humidity	Operating: 20% ~ 80% Storage: 10% ~ 90%

4.2 Interactive Pen

Type	
Technology method	Electromagnetic resonance method
Active area	Full screen
Technical Specs	
Resolution	2048 LPI (line per inch)
Tracking speed	133 PPS (points per second)
Pressure sensitive	1024 levels
Accuracy	± 0.5mm (center), ± 3 mm (edge and corner)
Height readable	5 mm
Pen	
Type	Pressure-sensitive, cordless
Detectable pen tilt	Tilt range ± 45°
User controls (switch)	Tip switch, 2 side switches
Tip	Replaceable

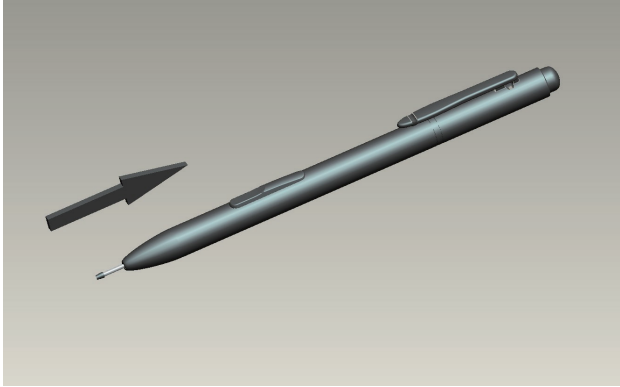
Note: Specification may be subject to change without prior notice.

5. Appendix

5.1 Replacing the Pen tip

When the tip gets too short or develops a sharp edge, you can replace it with the spare tips. Please follow below step:

- 1) Use the tool to pull the old tip straight out of the pen.
- 2) Insert a new pen tip into the stylus pen and push the tip until it stops.



Note: Tip replacement tool is not included.

Customer Support

For technical support or product service, see the table below or contact your reseller.

Note : You will need the product serial number.

Country/Region	Website	T = Telephone F = FAX	Email
Australia/New Zealand	www.viewsonic.com.au	AUS= 1800 880 818 NZ= 0800 008 822	service@au.viewsonic.com
Canada	www.viewsonic.com	T (Toll-Free)= 1-866-463-4775 T (Toll)= 1-424-233-2533 F= 1-909-468-3757	service.ca@viewsonic.com
Europe	www.viewsoniceurope.com	www.viewsoniceurope.com/uk/support/call-desk/	
Hong Kong	www.hk.viewsonic.com	T= 852 3102 2900	service@hk.viewsonic.com
India	www.in.viewsonic.com	T= 1800 266 0101	service@in.viewsonic.com
Korea	www.kr.viewsonic.com	T= 080 333 2131	service@kr.viewsonic.com
Latin America (Argentina)	www.viewsonic.com/la/	T= 0800-4441185	soporte@viewsonic.com
Latin America (Chile)	www.viewsonic.com/la/	T= 1230-020-7975	soporte@viewsonic.com
Latin America (Columbia)	www.viewsonic.com/la/	T= 01800-9-157235	soporte@viewsonic.com
Latin America (Mexico)	www.viewsonic.com/la/	T= 001-8882328722	soporte@viewsonic.com
Renta y Datos, 29 SUR 721, COL. LA PAZ, 72160 PUEBLA, PUE. Tel: 01.222.891.55.77 CON 10 LINEAS Electroser, Av Reforma No. 403Gx39 y 41, 97000 Mérida, Yucatán. Tel: 01.999.925.19.16 Other places please refer to http://www.viewsonic.com/la/soporte/index.htm#Mexico			
Latin America (Peru)	www.viewsonic.com/la/	T= 0800-54565	soporte@viewsonic.com
Macau	www.hk.viewsonic.com	T= 853 2870 0303	service@hk.viewsonic.com
Middle East	ap.viewsonic.com/me/	Contact your reseller	service@ap.viewsonic.com
Puerto Rico & Virgin Islands	www.viewsonic.com	T= 1-800-688-6688 (English) T= 1-866-379-1304 (Spanish) F= 1-909-468-3757	service.us@viewsonic.com soporte@viewsonic.com
Singapore/Malaysia/Thailand	www.viewsonic.com.sg	T= 65 6461 6044	service@sg.viewsonic.com
South Africa	ap.viewsonic.com/za/	Contact your reseller	service@ap.viewsonic.com
United States	www.viewsonic.com	T (Toll-Free)= 1-800-688-6688 T (Toll)= 1-424-233-2530 F= 1-909-468-3757	service.us@viewsonic.com

Limited Warranty

VIEWSONIC® PEN DISPLAY

What the warranty covers:

ViewSonic warrants its products to be free from defects in material and workmanship, under normal use, during the warranty period. If a product proves to be defective in material or workmanship during the warranty period, ViewSonic will, at its sole option, repair or replace the product with a like product. Replacement product or parts may include remanufactured or refurbished parts or components.

How long the warranty is effective:

ViewSonic Pen Displays are warranted for 1 year for all parts including the light source and 2 years for all labor from the date of the first consumer purchase.

Who the warranty protects:

This warranty is valid only for the first consumer purchaser.

What the warranty does not cover:

1. Any product on which the serial number has been defaced, modified or removed.
2. Damage, deterioration or malfunction resulting from:
 - a. Accident, misuse, neglect, fire, water, lightning, or other acts of nature, unauthorized product modification, or failure to follow instructions supplied with the product.
 - b. Any damage of the product due to shipment.
 - c. Removal or installation of the product.
 - d. Causes external to the product, such as electrical power fluctuations or failure.
 - e. Use of supplies or parts not meeting ViewSonic's specifications.
 - f. Normal wear and tear.
 - g. Any other cause which does not relate to a product defect.
3. Any product exhibiting a condition commonly known as "image burn-in" which results when a static image is displayed on the product for an extended period of time.
4. Removal, installation, one way transportation, insurance, and set-up service charges.

How to get service:

1. For information about receiving service under warranty, contact ViewSonic Customer Support (Please refer to Customer Support page). You will need to provide your product's serial number.
2. To obtain warranty service, you will be required to provide (a) the original dated sales slip, (b) your name, (c) your address, (d) a description of the problem, and (e) the serial number of the product.
3. Take or ship the product freight prepaid in the original container to an authorized ViewSonic service center or ViewSonic.
4. For additional information or the name of the nearest ViewSonic service center, contact ViewSonic.

Limitation of implied warranties:

There are no warranties, express or implied, which extend beyond the description contained herein including the implied warranty of merchantability and fitness for a particular purpose.

Exclusion of damages:

ViewSonic's liability is limited to the cost of repair or replacement of the product. ViewSonic shall not be liable for:

1. Damage to other property caused by any defects in the product, damages based upon inconvenience, loss of use of the product, loss of time, loss of profits, loss of business opportunity, loss of goodwill, interference with business relationships, or other commercial loss, even if advised of the possibility of such damages.
2. Any other damages, whether incidental, consequential or otherwise.
3. Any claim against the customer by any other party.
4. Repair or attempted repair by anyone not authorized by ViewSonic.

Effect of state law:

This warranty gives you specific legal rights, and you may also have other rights which vary from state to state. Some states do not allow limitations on implied warranties and/or do not allow the exclusion of incidental or consequential damages, so the above limitations and exclusions may not apply to you.

Sales outside the U.S.A. and Canada:

For warranty information and service on ViewSonic products sold outside of the U.S.A. and Canada, contact ViewSonic or your local ViewSonic dealer.

The warranty period for this product in mainland China (Hong Kong, Macao and Taiwan Excluded) is subject to the terms and conditions of the Maintenance Guarantee Card.

For users in Europe and Russia, full details of warranty provided can be found in www.viewsoniceurope.com under Support/Warranty Information.

