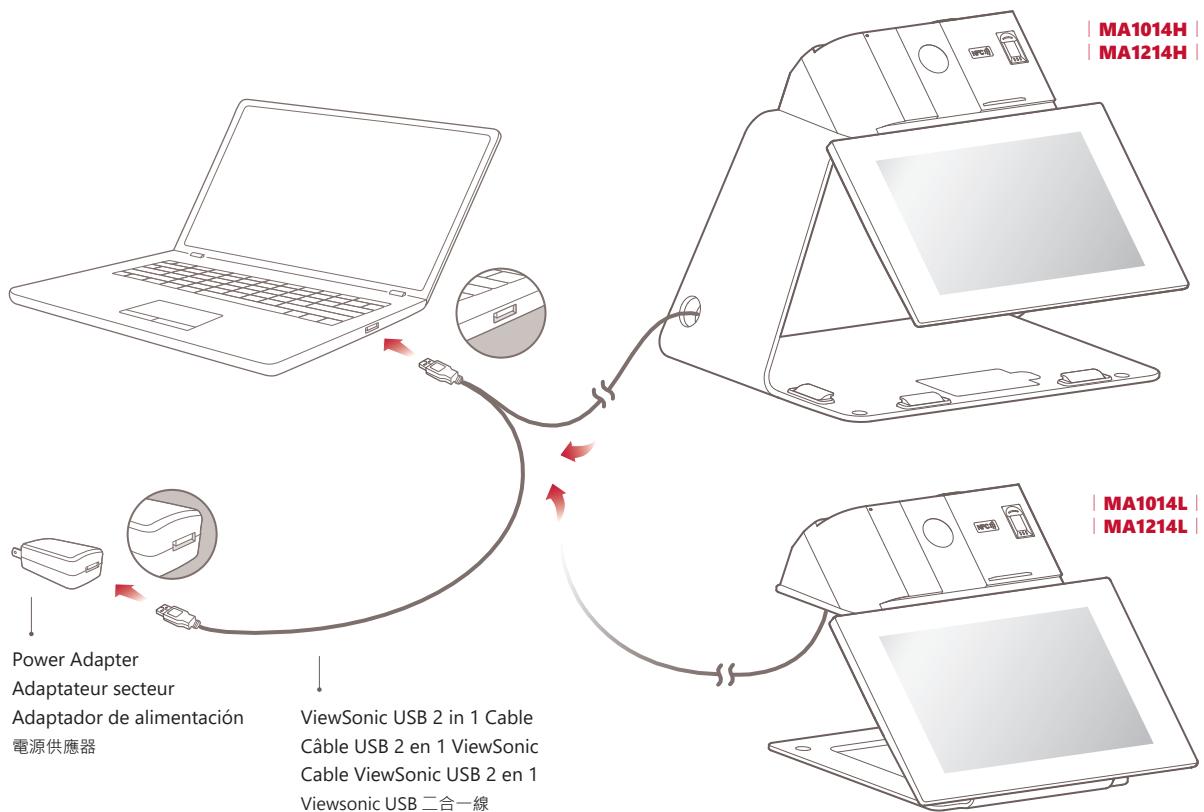


# MA1014H/L MA1214H/L Multiple-Authentication Pen Display

Quick Start Guide  
Guide de démarrage rapide  
Guía rápida de inicio  
快速入門手冊

1



2

**Download Driver / Télécharger le pilote / Descargar controlador / 驅動程式下載 :**

MA1014H <http://www.viewsonicglobal.com/q/MA1014H>

MA1014L <http://www.viewsonicglobal.com/q/MA1014L>

MA1214H <http://www.viewsonicglobal.com/q/MA1214H>

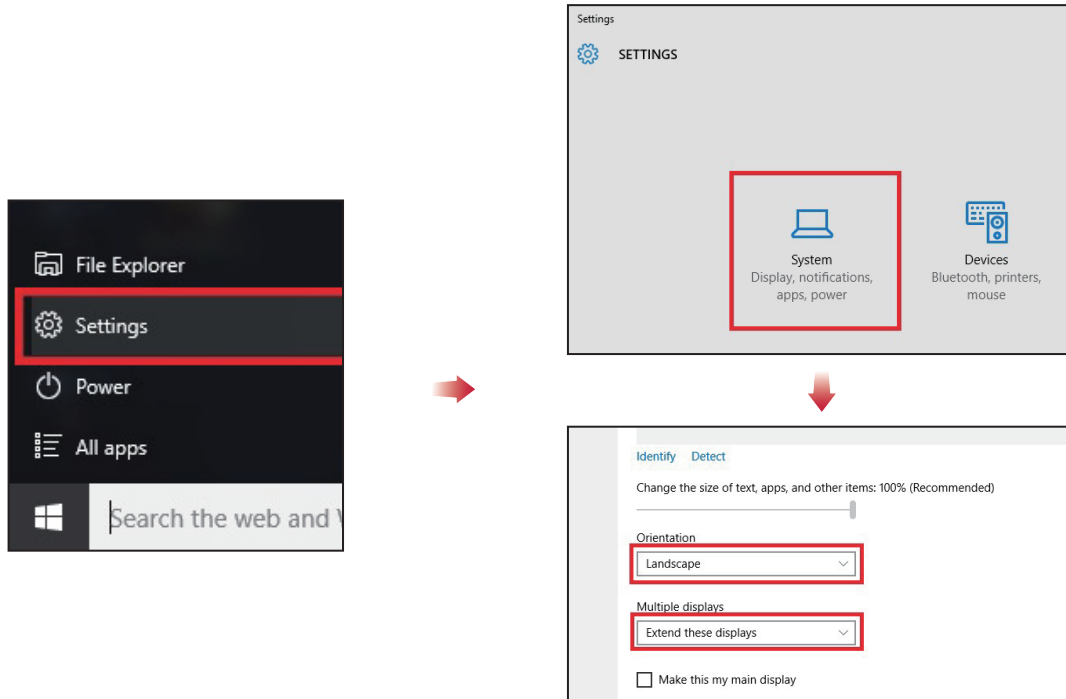
MA1214L <http://www.viewsonicglobal.com/q/MA1214L>

Install DisplayLink and PenDisplayDriver  
Installer DisplayLink et PenDisplayDriver  
Instalar DisplayLink y PenDisplayDriver  
安裝 DisplayLink & PenDisplay 驅動程式

 DisplayLink  
 ViewSignConsole\_Setup

For ViewSign Console, please visit: [https://manuals.viewsonic.com/ViewSign\\_Software](https://manuals.viewsonic.com/ViewSign_Software)  
Pour ViewSign Console, veuillez visiter: [https://manuals.viewsonic.com/ViewSign\\_Software](https://manuals.viewsonic.com/ViewSign_Software)  
Para ViewSign Console, visite: [https://manuals.viewsonic.com/ViewSign\\_Software](https://manuals.viewsonic.com/ViewSign_Software)  
有關 ViewSign Console, 請參閱: [https://manuals.viewsonic.com/ViewSign\\_Software](https://manuals.viewsonic.com/ViewSign_Software)

**3** Set as extended display / Définir comme affichage étendu  
/ Establecer como pantalla extendida / 設定延伸桌面



**4** Handwriting area mapping / Cartographie des zones d'écriture manuscrite  
/ Asignación del área de escritura a mano / 選定觸控區域

