

# PD1213

## Pen Display

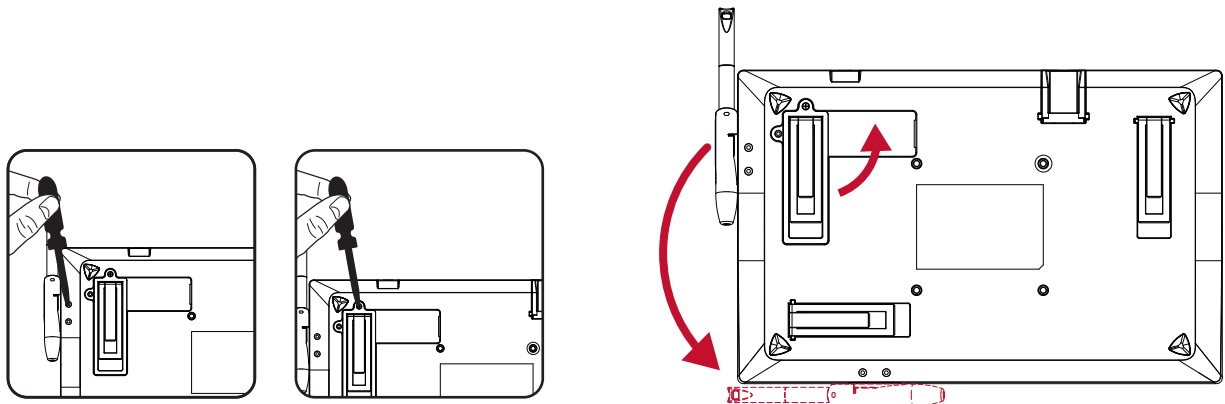
### Quick Start Guide

### Guide de démarrage rapide

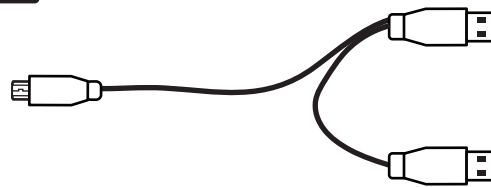
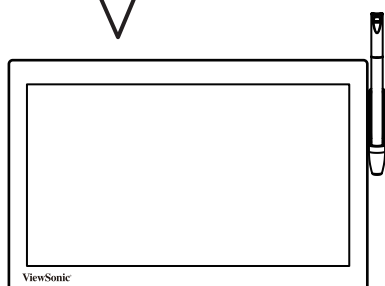
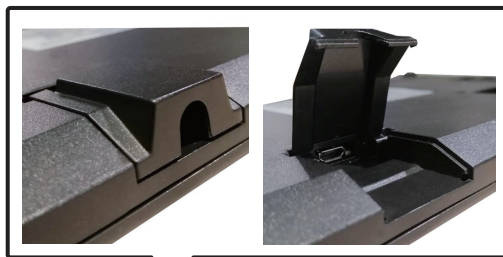
### Guía rápida de inicio

### 快速入門手冊

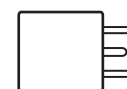
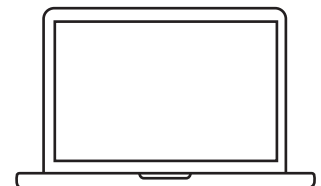
#### 1 Choose direction / Choisissez le sens / Elija la dirección / 改變腳架與筆座方向



#### 2



ViewSonic Micro USB 2 in 1  
Câble Micro USB 2 en 1 ViewSonic  
Cable ViewSonic Micro-USB 2 en 1  
Viewsonic Micro USB 2合一線



Power Adapter  
Adaptateur secteur  
Adaptador de alimentación  
電源供應器

#### 3 Download Driver / Télécharger le pilote / Descargar controlador / 驅動程式下載 :

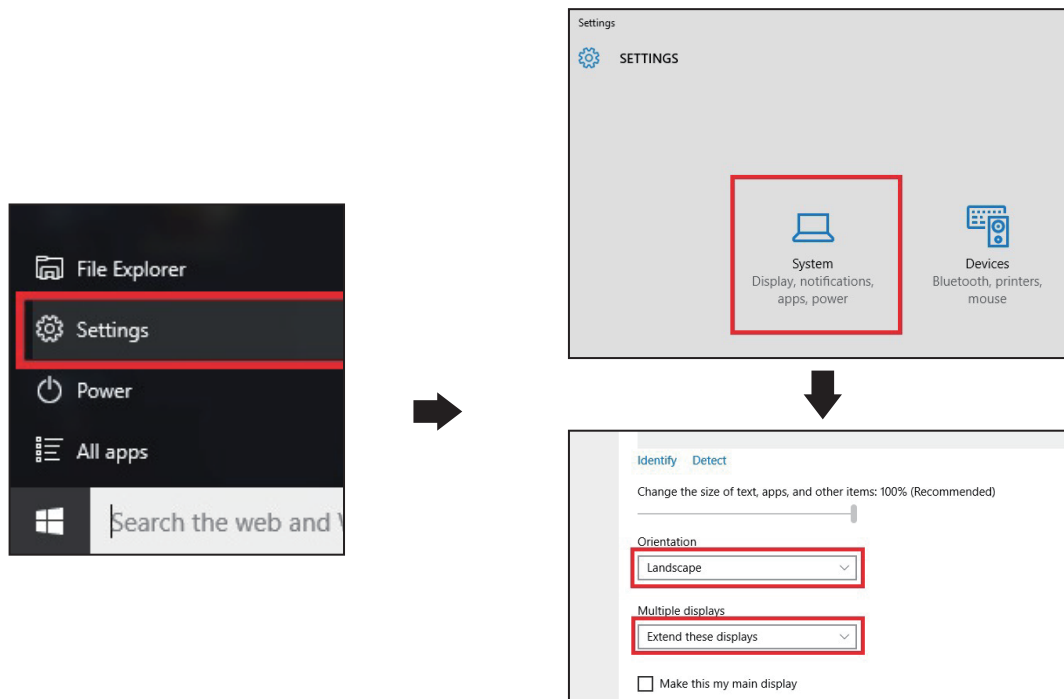
<http://www.viewsonicglobal.com/q/PD1213>

Install DisplayLink and PenDisplayDriver  
Installer DisplayLink et PenDisplayDriver  
Instalar DisplayLink y PenDisplayDriver  
安裝 DisplayLink & PenDisplay 驅動程式



For ViewSign Console, please visit: [https://manuals.viewsonic.com/ViewSign\\_Software](https://manuals.viewsonic.com/ViewSign_Software)  
Pour ViewSign Console, veuillez visiter: [https://manuals.viewsonic.com/ViewSign\\_Software](https://manuals.viewsonic.com/ViewSign_Software)  
Para ViewSign Console, visite: [https://manuals.viewsonic.com/ViewSign\\_Software](https://manuals.viewsonic.com/ViewSign_Software)  
有關 ViewSign Console, 請參閱: [https://manuals.viewsonic.com/ViewSign\\_Software](https://manuals.viewsonic.com/ViewSign_Software)

**4** Set as extended display / Définir comme affichage étendu  
/ Establecer como pantalla extendida / 設定延伸桌面



**5** Handwriting area mapping / Cartographie des zones d'écriture manuscrite  
/ Asignación del área de escritura a mano / 選定觸控區域

